

CATALOGUE 2018/19



THE FINEST
COMFORT SHOES
ON EARTH

CONTENTS

4 WOMEN'S SHOES	54 FINNAMIC
4 Slippers, Sandals	54 Men & Women
16 Clogs	
19 Felt-clogs	60 FINNSTRETCH
20 Shoes	60 Women
29 FinnPlus	
30 FinnSlim	62 PREVENTION SHOES
32 Boots	62 Men & Women
34 MEN'S SHOES	70 FINNORTHO
34 Slippers	70 Men & Women
36 Sandals	
39 Clogs	72 INFORMATION
40 Shoes	
50 Boots	74 COMFORT AND TRAVEL SOCKS
52 HIKING & TREKKING SHOES	75 FITTING GUIDE
52 Men & Women	

Cover page: Pordenone, p. 20

THE RIGHT SHOE FOR EVERY FOOT



WITH A FEATHER-LIGHT OUTSOLE

FinnRelax
22 Women
41 Men



FOR ESPECIALLY WIDE FEET

FinnPlus
29 Women



FOR NARROW FEET

FinnSlim
30 Women



FOR GENTLER WALKING

Finnamic
54 Men & Women



FOR SENSITIVE FEET

FinnStretch
60 Women



FOR PAIN-FREE WALKING

Prevention Shoes
62 Men & Women



FOR DIABETIC FOOT SYNDROME

FinnOrtho
70 Men & Women



Photo: Gerhard Hagen, Bamberg

GOOD TO GO WITH FINNCOMFORT®

Our feet carry us reliably through life. How freely and naturally we walk, stand, run, jump, or dance affects our well-being. At the same time, the way we live our lives today can put our feet under strain. How can we keep from overtaxing our feet while maintaining their mobility and health?

Our answer: with the right footwear – developed by bringing together medical knowledge with traditional craftsmanship. For more than 70 years, our company has stood for first-class functional and comfortable shoes to meet a variety of demands. In our modern factory in Hassfurt, Germany, we not only manufacture our wide range of shoe solutions but also design them ourselves. Experienced orthopedic shoemakers are already involved in the design of our foot molds and support the expansion of the product range.

“Made in Germany” is the affirmation of our responsibility as an employer in the region. At the same time, this seal of excellence embodies our innovative spirit and our commitment to

uncompromising quality. Each individual step – from design to production to quality control – is carried out with the utmost care on our own premises. A majority of our models are hand-sewn. After careful selection, we use materials almost exclusively from Germany and other European countries.

This catalog presents only part of our current offer. We therefore ask that you visit our specialist dealers and obtain competent advice there. All models are usually available on short notice. Discover your personal FinnComfort® favorites and pamper your feet!

Ralph Wolter
Managing Director and co-owner of FinnComfort®





PATTAYA
fango
Campagnolo

REFLEX ZONE
insoles included*



PATTAYA

2558 CLASSIC

COLOUR	LEATHER	SIZE
amarena	Era	36 - 42
fango	Campagnolo	36 - 42
black	Nappa seda	34 - 43



Some shoes
available in
**PLUS
SIZES**



KOS

2554 CLASSIC

COLOUR	LEATHER	SIZE
rock	Sartor	34 - 43
black/jasmin	Nappa seda/Okapi	34 - 45



Some shoes
available in
**PLUS
SIZES**

SANSIBAR

2550 CLASSIC

COLOUR	LEATHER	SIZE
aqua	Zamo	36 - 42
white	Nappa	34 - 43
red	Venezia	36 - 42
atoll	Victory	36 - 42
black	Nappa seda	34 - 45
blue	Missouri	34 - 43



SLIPPERS SANDALS

SUMMERTIME LIGHTNESS

REFLEX ZONE
insoles included*



JAMAICA



2519 CLASSIC

COLOUR	LEATHER	SIZE
street	Patagonia/Flower	36 - 42
fire	Mock croc	34 - 43
black	Frog/Buggy	34 - 43



KAILUA



2597 CLASSIC

COLOUR	LEATHER	SIZE
black	Waving/Nubuck	36 - 42
marron/black	Fleur/Buggy	36 - 42



CANZO



2688 CITY

COLOUR	LEATHER	SIZE
fango	Campagnolo	2 - 9
black	Frog	2 - 9
bordeaux	Textured patent	2 - 9

PISA



2501 CLASSIC

COLOUR	LEATHER	SIZE
multi/pomodore	Summer/Nube	36 - 42
bordeaux	Textured patent	34 - 43
white	Nappa	34 - 43
black	Nappa seda/Textured patent	34 - 43
blue	Nappa	34 - 43



WALKING WELL



WE USE NATURAL MATERIALS FOR OUR PRODUCTS.

Skin-friendly, vegetable-tanned top leather and two layers of jute fiber ensure superior moisture absorption and an excellent climate for the feet.

For more information, see page 44.



KORFU



1508 CLASSIC

COLOUR	LEATHER	SIZE
marine	Buggy	35 - 47
white	Nappa	35 - 47
tobacco	Nubuck carat	35 - 50
black	Bison	35 - 50

Some shoes available in PLUS SIZES



WITH THE FINNCOMFORT® SOFT FOOTBED

The soft footbed, a cushioned, a super comfortable footbed, features an extra layer of foam.

This long-lasting material consisting of resilient memory foam promises a very soft step. It is ideal for sensitive feet, because the entire body weight is gently absorbed at every step.



MIRA-SOFT*

82582	CLASSIC-SOFT	
COLOUR	LEATHER	SIZE
white	Nappa/Textured patent	34 - 43
red/flame	Venezia/Textured patent	36 - 42
black	Buggy/Textured patent	34 - 43



MENORCA-SOFT*

82564	CLASSIC-SOFT	
COLOUR	LEATHER	SIZE
red	Light	34 - 43
atlantic	Venezia	36 - 42
black	Nappa seda	34 - 43



VENTURA-SOFT*

82568	CLASSIC-SOFT	
COLOUR	LEATHER	SIZE
mouse	Nubuck soft	36 - 42
ocean	Light	34 - 43
monzared	Nubuck	36 - 42
black	Longbeach	34 - 43



PALAU*

3350	CLASSIC	
COLOUR	LEATHER	SIZE
argento/atlantic	Doyle/Patagonia	36 - 42

Shoes with this symbol are equipped with FinnRelax.



NADI*

3351	CLASSIC	
COLOUR	LEATHER	SIZE
fango/silver	Campagnolo/Simona	36 - 42

For the perfect footfall! These models delight with the remarkably light weight of their outsoles. The lightness is achieved through the use of the material "EVA", which has millions of tiny air chambers. The excellent cushioning guarantees extraordinary walking enjoyment, step for step.

FINNRELAX

FEATHERLIGHT OUTSOLES

**VERIN**

2806	FASHION-LINE	
COLOUR	LEATHER	SIZE
black	Nubuck	36 - 42

**CALVIA**

2807	FASHION-LINE	
COLOUR	LEATHER	SIZE
black	Nubuck	36 - 42

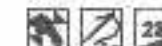
... EMBELLISHED WITH
SWAROVSKI® CRYSTALS.

Swarovski is the premium brand for the finest crystal embellishments since 1895. It is recognized for its innovative excellence and its collaborations with top-class designers and brands in the fashion, jewelry, accessories, interior design, and lighting industries across the globe.



GLAMOUR

FOR STEPPING OUT

REFLEX ZONE
insoles included***SAMOA**

2664	CITY	
COLOUR	LEATHER	SIZE
black	Nappa seda	2 - 9



LUXURY FOR THE FEET

**PALMANOVA**

02685	CITY	
COLOUR	LEATHER	SIZE
fango	Campagnolo	3 - 8
black	Waving	3 - 8

**ADANA**

2660	CITY	
COLOUR	LEATHER	SIZE
black	Nappa seda	2 - 9
ice	Luxory	3 - 8
fango	Campagnolo	3 - 8

REFLEX ZONE
insoles included*



FÖNEN

2666		CITY
COLOUR	LEATHER	SIZE
silver	Luxory	2 - 9
black	Nappa seda	2 - 9



SUMATRA

2594		CLASSIC
COLOUR	LEATHER	SIZE
mud/atlantic	Bruce/Patagonia	36 - 42

RELIABLE QUALITY

All shoes are developed by FinnComfort® itself and manufactured in Germany. This is the only way for us to ensure continuous quality in our products.



COSTA

2380		CITY-SPORT
COLOUR	LEATHER	SIZE
atoll	Nubuck	3 - 8
red	Patagonia	3 - 8
black	Buggy	2 - 9



MILOS

2560		CLASSIC
COLOUR	LEATHER	SIZE
fango	Pony	36 - 42
white	Nappa	34 - 43
signalred	Eldora	36 - 42
black	Nappa seda	34 - 43



BARCA

2804		FASHION-LINE
COLOUR	LEATHER	SIZE
grey	Monroe	36 - 42



SALONIKI

2557		CLASSIC
COLOUR	LEATHER	SIZE
bluette	Mozart	36 - 42
black/jasmin	Nappa seda/Okapi	34 - 45

Some shoes available in PLUS SIZES

REFLEX ZONE
insoles included*



SYLT

2509		CLASSIC
COLOUR	LEATHER	SIZE
black	Nubuck	35 - 42
white	Nappa	35 - 47

Some shoes available in PLUS SIZES



ISCHIA

2106		LADY-LINE
COLOUR	LEATHER	SIZE
black	Buggy	2½ - 9

USEDOM

2534		CLASSIC
COLOUR	LEATHER	SIZE
fango	Campagnolo	36 - 42
white	Nappa	34 - 43
black	Nappa seda	34 - 43

Upper velcro fastener turned around

LET THE SUMMER COME



GOMERA

2562		CLASSIC
COLOUR	LEATHER	SIZE
atoll	Victory	36 - 42
mud	Bruce	36 - 42
red	Venezia	36 - 42
taupe	Equipe	34 - 43
black	PlisseeLight	34 - 43



MALAGA

2515		CLASSIC
COLOUR	LEATHER	SIZE
black	Buggy	35 - 42

WITH THE FINNCOMFORT® SOFT FOOTBED



SINTRA-SOFT*

82585		CLASSIC-SOFT
COLOUR	LEATHER	SIZE
taupe	Luxperl	34 - 43
black	Nappa seda	34 - 43

* without massage footbeds

For more information, see page 8.

Fitting guide see page 75



ROSEAU
bronze
Azteco

CLOGS

COMFORTABLY CASUAL



REFLEX ZONE
insoles included*



BELEM

2555	CLASSIC	
COLOUR	LEATHER	SIZE
black	Nappa seda	34 - 43



ROSEAU

2598	CLASSIC	
COLOUR	LEATHER	SIZE
black	Buggy	36 - 42
bronze	Azteco	36 - 42



STANFORD

2552	CLASSIC	
COLOUR	LEATHER	SIZE
denim	Patagonia	36 - 42
multi	Rata	36 - 42
red	Venice	36 - 42
bronze	Gotico	34 - 43
black	Nappa seda	34 - 45

Some shoes
available in
**PLUS
SIZES**



WE STILL SEW OUR OWN.

More than 70 years of extensive expertise and experience in shoe manufacturing have set an unmatched standard of quality at FinnComfort®.

Shoes with this symbol are hand sewn.

REFLEX ZONE
insoles included*



"This shoe gives me noticeable support in my challenging day-to-day work."



JAVA

2520	CLASSIC	
COLOUR	LEATHER	SIZE
ocean	Light	35 - 42



ASSUAN

2525	CLASSIC	
COLOUR	LEATHER	SIZE
white	Nappa	34 - 43



AUSSEE

2526	CLASSIC	
COLOUR	LEATHER	SIZE
darkblue	Montana	34 - 43
white	Nappa	34 - 43
black	Nappa seda	34 - 43



ARLBERG

6560	CLASSIC	
COLOUR	MATERIAL	SIZE
lightgrey/cassis	Felt	36 - 42

FELT CLOGS

THE COZY ONE FOR HOME



ANDERMATT

6550	CLASSIC	
COLOUR	MATERIAL	SIZE
cassis	Felt	36 - 42
darkblue	Felt	36 - 42




Also available in PLUS SIZES

TIROL

6500	CLASSIC	
COLOUR	MATERIAL	SIZE
anthracite	Felt	36 - 47



REFLEX ZONE
insoles optionally
available




PORDENONE 
2377 CITY-SPORT
COLOUR **LEATHER** **SIZE**
bianco/flour Nubuck/Hair 3 - 8

SHOES

WALK MORE COMFORTABLY



SOIANO 
2374 CITY-SPORT
COLOUR **LEATHER** **SIZE**
black Buggy 3 - 8
atoll Nubuck 3 - 8



SARNIA 
2365 CITY-SPORT
COLOUR **LEATHER** **SIZE**
denim/white Patagonia/Nappa 3 - 8
nero/black Aspide/Nappa seda 3 - 8



SIDONIA 
2364 CITY-SPORT
COLOUR **LEATHER** **SIZE**
street Patagonia/Skipper 3 - 8
atlantic/argento Patagonia/Doyle 3 - 8
black/nero Nappa seda/Aspide 3 - 8

REFLEX ZONE
insoles optionally
available



These models are impressive for the remarkably light weight of their outsoles. The lightness is achieved through the "EVA" material, with millions of tiny air chambers. The excellent step cushioning guarantees extraordinary walking pleasure with each step.

BARLETTA
sky
Nubuck soft



BISCAYA



2850	FINNRELAX	
COLOUR	LEATHER	SIZE
street/ciel/street	Flower/Velour/Patagonia	36 - 42
ocean	Tucson	36 - 42
black/shadow	Rodeobuk/Nubuck	35 - 43

FINNRELAX

FEATHERLIGHT OUTSOLES



Shoes with this symbol are equipped with FinnRelax.

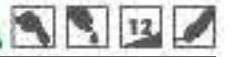


LEON



2854	FINNRELAX	
COLOUR	LEATHER	SIZE
street	BearNubuck	36 - 42
black	Buggy	35 - 43

BARLETTA



2851	FINNRELAX	
COLOUR	LEATHER	SIZE
sky	Nubuck soft	36 - 42
rock	Nubuck	35 - 43
electro	Nubuck	35 - 43
indianred	Longbeach	36 - 42



SOHO



2743	FASHION-LINE	
COLOUR	LEATHER	SIZE
navy/jasmin	Nubuck rona/Okapi	35 - 43
black	Nappa seda/Buggy	35 - 43

REFLEX ZONE
insoles optionally
available



MESTRE FINNRELAX
2476

COLOUR	LEATHER	SIZE
black	Buggy	3 - 8



ELMHURST LADY-LINE
2233

COLOUR	LEATHER	SIZE
pacific	Velour	3 - 8



ALEPPO LADY-LINE
2110

COLOUR	LEATHER	SIZE
black	Nappa seda	2½ - 9
sand	Tucson	2½ - 9

Velcro fastener turned around



MINEOLA LADY-LINE
2238

COLOUR	LEATHER	SIZE
ecru	Crash/Avonette	3 - 8
black/black	Crash/Nubuck/Nappa seda	3 - 8



OVIEDO LADY-LINE
2152

COLOUR	LEATHER	SIZE
rock	BearReno	2½ - 9
nero/black	Textured patent/Nappa seda	2½ - 9



LAZIO LADY-LINE
2223

COLOUR	LEATHER	SIZE
black	Textured patent/Nubuck	3 - 8



DESENZANO LADY-LINE
2226

COLOUR	LEATHER	SIZE
black	Textured patent/Buggy	2 - 9



GALWAY LADY-LINE
2188

COLOUR	LEATHER	SIZE
black	Nappa seda	2 - 9



ALMERIA

2206	LADY-LINE	
COLOUR	LEATHER	SIZE
black	Longbeach	3 - 8

BEIRUT

2173	LADY-LINE	
COLOUR	LEATHER	SIZE
black	Nappa seda/Textured patent	2½ - 9



SEOUL

2483	CITY-SPORT	
COLOUR	LEATHER	SIZE
black	Nappa seda/Nubuck	2½ - 9



ACAPULCO

2489	CITY-SPORT	
COLOUR	LEATHER	SIZE
darkbrown/nutella	Nappa seda/Nubuck	2½ - 9
blue/royal	Nappa/Nubuck	2½ - 9
black	Nappa seda/Nubuck	2½ - 9



REFLEX ZONE
insoles optionally
available



SPECIAL DETAILS TO
FALL IN LOVE WITH.

VIVERO

2353	CITY-SPORT	
COLOUR	LEATHER	SIZE
black	Nappa seda	2 - 9



AQUILA

3594	CITY	
COLOUR	LEATHER	SIZE
rock	Nubuck	3 - 8
black	Nubuck	3 - 8



NAIROBI

3558	CITY	
COLOUR	LEATHER	SIZE
black	Nappa seda/Nubuck	2½ - 9

WITH THE FINNCOMFORT® SOFT FOOTBED



BRAC-SOFT*

82362	CITY-SPORT-SOFT	
COLOUR	LEATHER	SIZE
lake	Nubuckvienna	3 - 8
rock	BearReno	3 - 8

* without massage footbeds

For more information, see page 8.

Fitting guide see page 75

REFLEX ZONE
insoles optionally
available



NARITA



3551		CITY
COLOUR	LEATHER	SIZE
black	Nappa seda	2½ - 9

LAVAL



2058		CLASSIC
COLOUR	LEATHER	SIZE
campari	Arena	34 - 43
black	Nappa seda	34 - 43



LEXINGTON



2056		CLASSIC
COLOUR	LEATHER	SIZE
rock	BearReno	36 - 42
black	Plissee	34 - 43



LINZ



1008		CLASSIC
COLOUR	LEATHER	SIZE
black/brown	Nubuck/Nevada	35 - 50
Leather lining		

Also
available in
PLUS
SIZES



MOSTAR



3598		CITY
COLOUR	LEATHER	SIZE
black	Nubuck	2 - 9
Leather lining		



FOR ESPECIALLY
WIDE FEET

The extra-wide cut gives larger feet a pleasant amount of space. The shape of the shoe and footbed is designed so that the shoe is very comfortable despite the greater amount of free space. For a perfect fit and safe walking.



ROYAN*



3750		FINNPLUS
COLOUR	LEATHER	SIZE
black	Buggy/Estelar	36 - 43

* without massage footbeds



REIMS*



3752		FINNPLUS
COLOUR	LEATHER	SIZE
black	Buggy/Estelar	36 - 43

* without massage footbeds

MAKE ROOM!

CUT EXTRA WIDE



FOR ESPECIALLY
SLENDER FEET

The extra narrow cut pampers delicate feet through optimal comfort. These models are suitable for all those who walk on narrow feet.

The narrow cut of the shoe and footbed offers an optimal fit and foothold – so even dainty feet can walk safely and comfortably.



FUMANE
schwarz
Nappa seda

FINNSLIM
CUT EXTRA NARROW



LAZISE* **FINNSLIM**
3430
COLOUR LEATHER SIZE
darkblue Buggy 2 - 9



MANERBA* **FINNSLIM**
3431
COLOUR LEATHER SIZE
black Buggy 2 - 9



FUMANE* **FINNSLIM**
3432
COLOUR LEATHER SIZE
signalred Eldora 2 - 9
black Nappa seda 2 - 9



HARUMI* **FINNSLIM**
3404
COLOUR LEATHER SIZE
black Nappa seda 2 - 9

TAILOR-MADE AND SLIMLINE



ARIANO* **FINNSLIM**
3400
COLOUR LEATHER SIZE
marder Bear 2 - 9
black Longbeach 2 - 9





This boot adapts to different calf widths through adjustable lacing.



The lateral zipper facilitates putting them on and taking them off.

For information on wool and lambskin lining, see page 51.

SESTRIERE		
2200	LADY-LINE	
COLOUR	LEATHER	SIZE
black	SoftNappa	2 - 9
Woolen lining		



AARAU		
2490	CITY-SPORT	
COLOUR	LEATHER	SIZE
black	Nappa seda	2½ - 9
Leather lining		



FLACHAU		
2166	LADY-LINE	
COLOUR	LEATHER	SIZE
black	Nappa seda/Frog	2½ - 9
Woolen lining		



BIEL		
2168	LADY-LINE	
COLOUR	LEATHER	SIZE
black	Nappa seda/Frog	2½ - 9
Woolen lining		



MINSK		
2175	LADY-LINE	
COLOUR	LEATHER	SIZE
black	Nappa seda	2½ - 9
Lambskin lined		



STERZING		
2210	LADY-LINE	
COLOUR	LEATHER	SIZE
black	Nappa seda/Nubuck	2 - 9
Woolen lining		

BOOTS

LIGHT ON YOUR FEET ON COLD DAYS



LEROS

1535	CLASSIC	
COLOUR	LEATHER	SIZE
black	Bison	39 - 47

REFLEX ZONE
insoles included*



Also available in PLUS SIZES

KORFU

1508	CLASSIC	
COLOUR	LEATHER	SIZE
darkgrey	BearReno	39 - 47
white	Nappa	35 - 47
marine	Buggy	35 - 47
tobacco	Nubuck carat	35 - 50
black	Bison	35 - 50



RIAD

1505	CLASSIC	
COLOUR	LEATHER	SIZE
brown	Karbo	39 - 47
black	Buggy	35 - 47

WITH THE FINNCOMFORT® SOFT FOOTBED



DANZIG-SOFT*

81529	CLASSIC-SOFT	
COLOUR	LEATHER	SIZE
grey	Impala	39 - 47
black	Bison	39 - 47
onion	Salsa	39 - 47

For more information, see page 8.

* without massage footbeds

SLIPPERS

ROOM FOR RELAXING



SYLT
darkbrown
Saratoga

REFLEX ZONE
insoles included*

TUNIS

1511	CLASSIC	
COLOUR	LEATHER	SIZE
havanna	Buggy	39 - 50

Velcro fastener turned around

Also available in PLUS SIZES



SYLT

2509	CLASSIC	
COLOUR	LEATHER	SIZE
white	Nappa	35 - 47
darkbrown	Saratoga	39 - 47



MILTON

1520	CLASSIC	
COLOUR	LEATHER	SIZE
nut	Bison	39 - 47



RIALTO

1523	CLASSIC	
COLOUR	LEATHER	SIZE
black	Bison	39 - 47

SANDALS

YOUR COMPANIONS FOR A SUMMER STROLL

REFLEX ZONE
insoles included*



BALTRUM



1518 CLASSIC

COLOUR	LEATHER	SIZE
nut	Kansas	35 - 47
black	Nappa	35 - 47

Upper velcro fastener turned around



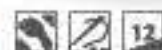
PRESTON



1152 CLASSIC-SPORT

COLOUR	LEATHER	SIZE
chestnut	Buttero	6 - 12

COLORADO



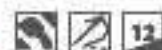
1150 CLASSIC-SPORT

COLOUR	LEATHER	SIZE
havanna/black	Buggy	6 - 12

WITH THE FINNCOMFORT® SOFT FOOTBED



TORO-SOFT*



81528 CLASSIC-SOFT

COLOUR	LEATHER	SIZE
black	Cherokee	39 - 47
wood	Cherokee	39 - 47

* without massage footbeds

For more information, see page 8.



TIROL

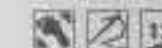


6500 CLASSIC

COLOUR	MATERIAL	SIZE
anthracite	Felt	36 - 47



AMALFI



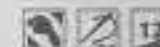
1515 CLASSIC

COLOUR	LEATHER	SIZE
grey	Impala	39 - 47
malt	Iowa	35 - 50
black	CaratRangun	35 - 50

Also available in PLUS SIZES



VENEDIG



1504 CLASSIC

COLOUR	LEATHER	SIZE
black	Bosco	35 - 47
white	Nappa	35 - 47
blue	Nappa	35 - 47

CLOGS
PAMPER YOUR FEET



PREZZO
darkgrey/street
Patagonia/Skipper

SHOES

RELAXATION



REFLEX ZONE
insoles optionally
available



PREZZO



1370	CITY-SPORT	
COLOUR	LEATHER	SIZE
marine	Buggy	6 - 15
peat	Algarve	6 - 15
darkgrey/street	Patagonia/Skipper	6 - 12

Also
available in
PLUS
SIZES

ENFIELD



1374	CITY-SPORT	
COLOUR	LEATHER	SIZE
chocolate	Giovanni	6 - 12



BRADFORD



1270	CITY-SPORT	
COLOUR	LEATHER	SIZE
wood	Cherokee	6 - 12



EDMONTON



1273	CITY-SPORT	
COLOUR	LEATHER	SIZE
black	Spona cowhide	6 - 12

REFLEX ZONE
insoles optionally
available



“With FinnComfort® shoes, you can move safely and comfortably on all parquet floors. Simply the right model for every outfit and occasion.”



KIRUNA

1355 FINNRELAX

COLOUR	LEATHER	SIZE
black	Spona cowhide	6 - 12
street	Patagonia	6 - 12



CHENNAI

1350 FINNRELAX

COLOUR	LEATHER	SIZE
cinnamon	Longbeach	6 - 12
white	Nappa	6 - 12
black	Cherokee	6 - 12

Shoes with this symbol are equipped with FinnRelax.

For more information, see page 22.



SURFSIDE

1293 CITY-SPORT

COLOUR	LEATHER	SIZE
range	Fores	6 - 12



CARDIFF

1284 CITY-SPORT

COLOUR	LEATHER	SIZE
black	Nappa seda	6 - 12



SYRACUSE

1281 CITY-SPORT

COLOUR	LEATHER	SIZE
teak	Piper	6 - 12
black	Nappa seda	6 - 12



ALAMO

1288 CITY-SPORT

COLOUR	LEATHER	SIZE
black	Bison/Buggy	6 - 12
chestnut/cigar	Plavajo/Palmer	6 - 12



BREST

1250 CITY-SPORT

COLOUR	LEATHER	SIZE
black	Siena	6 - 12

REFLEX ZONE
insoles optionally
available

MANUFACTURED FROM NATURAL MATERIALS

1 LEATHER

Vegetable tanned

During vegetable tanning, the tanning agents are derived from various woods and barks. Free of chemical additives – eco-friendly for a healthy (foot) climate.

2 NATURAL RUBBER

Ecological and sustainable

For producing latex, the rubber tree's bark is scored to obtain the sap. This natural product is used in the FinnComfort® footbed as the basis for the resilient cushioning material and as a binder and adhesive for cork footbeds and top leather.



3 CORK

The fascinating noble natural product

The sustainable raw material is extracted from the bark of the cork oak tree and has very special properties: It is lightweight, flexible, absorbs shocks and resists most bacteria. It also insulates against cold and heat. Precisely why cork is the main component of every FinnComfort® footbed.

4 JUTE

The golden fiber

The glossy golden jute fibers in the FinnComfort® footbed ensure additional stabilization and better humidity absorption. This material is specially planted for harvest. Thus, resources are not destroyed, but specially created.



MILANO



1201		CITY
COLOUR	LEATHER	SIZE
chianti	Montana	5½ - 12
black	Montana	5½ - 12



BUDAPEST



1212		CITY
COLOUR	LEATHER	SIZE
beaver	Vally	6 - 12
black	Montana	6 - 12



KENT



1204		CITY
COLOUR	LEATHER	SIZE
black	Trento	6 - 12

TOLEDO



1205		CITY
COLOUR	LEATHER	SIZE
black	Trento	6 - 12

REFLEX ZONE
insoles optionally
available



HANNOVER

1196	CLASSIC-SPORT	
COLOUR	LEATHER	SIZE
black	Montana	6 - 12

Velcro fastener turned around



BAGAN

1114	CLASSIC-SPORT	
COLOUR	LEATHER	SIZE
street	Patagonia	6 - 12
black	Buggy	6 - 12



BRAGA

1108	CLASSIC-SPORT	
COLOUR	LEATHER	SIZE
black	Bison	5½ - 12

NANTES

1107	CLASSIC-SPORT	
COLOUR	LEATHER	SIZE
black	Bison	6 - 12



NORWICH

1111	CLASSIC-SPORT	
COLOUR	LEATHER	SIZE
espresso/coffee	Glover/Nubuck	6 - 12
black	Montana	6 - 12

RELIABLE QUALITY



All shoes are developed by FinnComfort® itself and manufactured in Germany. This is the only way for us to ensure continuous quality in our products.



METZ

1100	CLASSIC-SPORT	
COLOUR	LEATHER	SIZE
black	CaratRangun	6 - 12



DIJON

1101	CLASSIC-SPORT	
COLOUR	LEATHER	SIZE
black	Trento	5½ - 15
teak	Idaho	5½ - 15
darkbrown	Sarasota	6 - 12

Some shoes available in PLUS SIZES

REFLEX ZONE
insoles optionally
available



YORK

1005		CLASSIC
COLOUR	LEATHER	SIZE
black	Togo	35 - 50
espresso	Togo	35 - 50

Also available in PLUS SIZES



KÖLN

1019		CLASSIC
COLOUR	LEATHER	SIZE
espresso	Togo	39 - 47
black	Togo	39 - 47

Velcro fastener turned around



VAASA

1000		CLASSIC
COLOUR	LEATHER	SIZE
coffee	Full grain	35 - 50
white	Nappa	35 - 47
black	Nappa	35 - 50

Some shoes available in PLUS SIZES



BADEN

1009		CLASSIC
COLOUR	LEATHER	SIZE
black	Ranger	35 - 47
white	Nappa	35 - 47
coffee	Nubuckvienna	35 - 47

QUALITY YOU CAN FEEL.

WE STILL SEW OUR OWN.



More than 70 years of extensive expertise and experience in shoe manufacturing have set an unmatched standard of quality at FinnComfort®.



Shoes with this symbol are hand sewn.



Also available in PLUS SIZES

LINZ

1008		CLASSIC
COLOUR	LEATHER	SIZE
black/brown	Nubuck/Nevada	35 - 50

Leather lining



CORTINA

4001		CLASSIC
COLOUR	LEATHER	SIZE
black	Cordoba	39 - 47

Lambskin lined

BOOTS

WINTERFIT WITH FROST PROTECTION



SUPER COMFORTABLE AND WARMLY LINED

A warm lining made of cozy lambskin or natural wool provides excellent natural warmth in winter.

The soft material adapts perfectly to your feet and forms an insulating layer of air that warms wonderfully without making your feet sweat. Because of their natural function, lambskin and wool work as a climate control system, that regulates the temperature and humidity.

So bring winter on!



GRENOBLE

4000		CLASSIC
COLOUR	LEATHER	SIZE
black	Nappa	39 - 47

Lambskin lined



WHISTLER

1194		CLASSIC-SPORT
COLOUR	LEATHER	SIZE
black	Longbeach	6 - 12

Woolen lining



TIBET

3914	CLASSIC-SPORT	
COLOUR	LEATHER	SIZE
slate/black	Neptun/Buggy	3 - 12



GARMISCH



3911	CLASSIC-SPORT	
COLOUR	LEATHER	SIZE
ebony/bark	Chimera/Piper	3 - 12

Leather lining

HIKING & TREKKING SHOES

WEATHERPROOF & SURE-FOOTED OUTDOORS

TÖLZ



3910	CLASSIC-SPORT	
COLOUR	LEATHER	SIZE
brown	Bosco	3 - 12

Leather lining



In wind and any weather, SympaTex® is especially comfortable. Sheer, tear-resistant SympaTex® membrane makes leather shoes watertight on the outside but breathable on the inside. This provides a pleasant foot climate.

The models on this page are equipped with SympaTex® Membrane.

MURNAU



3813	CLASSIC-SPORT	
COLOUR	LEATHER	SIZE
slate/black	Neptun/Buggy	3 - 12



BERN



3810	CLASSIC-SPORT	
COLOUR	LEATHER	SIZE
black	Bosco	3 - 12

Leather lining

Our feet are part of the body that takes the most punishment. They carry our entire weight and are constantly stabilizing the body's center of gravity. Finnamic's rockered heel design encourages gentle and low-impact heel strike and gently and effortlessly guides the motion impulse from the lateral foot via the medial fore-foot to the big toe. The broad, flat and stable mid-section may relieve unnecessary strain on the foot while stabilizing the body. Finnamic provides optimum balance and fit.



TIBERIAS
fango
Campagnolo



FINNAMIC

DOWNRIGHT COMFORTABLE TO WALK IN

"I can tell that walking a lot is really hard on my feet. That's why I want to consciously do something to give my feet a break. Finnamic has been a fantastic discovery for me."



YUMA



		FINNAMIC
COLOUR	LEATHER	SIZE
red/street	Patagonia	36 - 42
lake/grey	Nubuckvienna/BearReno	36 - 42
grey/sandia	BearReno/Nubuck	36 - 42
black/olive	Buggy	35 - 47

Velcro fastener turned around



ANDROS



		FINNAMIC
COLOUR	LEATHER	SIZE
black	PlisseeLight	35 - 47
atlantic	Venice	36 - 42



FINNAMIC – SUPPORTS OVERTAXED FEET



TIBERIAS



1586	FINNAMIC	
COLOUR	LEATHER	SIZE
fango	Campagnolo	36 - 42



NAXOS



1551	FINNAMIC	
COLOUR	LEATHER	SIZE
white/black	Nappa/Buggy	3 - 9
Velcro fastener turned around		



CORINTH



1550	FINNAMIC	
COLOUR	LEATHER	SIZE
black	Buggy	3 - 12
Velcro fastener turned around		



COLUMBIA
street
Patagonia/Skipper



Rockered soles
for gentle and
cushioned walking

Wide and flat
mid-section for secure
and relaxed standing

Rockered forefoot section
encourages a natural
heel-to-toe rolling motion



COLUMBIA



2922	FINNAMIC	
COLOUR	LEATHER	SIZE
ecru	Avonette/Derry	3 - 8
denim	Patagonia/Skipper	3 - 8
street	Patagonia/Skipper	3 - 8



PRETORIA



2901	FINNAMIC	
COLOUR	LEATHER	SIZE
white	Nappa	3 - 12
black	Buggy	3 - 12



1 Padded topline for pleasant, comfortable walking

2 Rockered heel design for protective and cushioned walking

3 FinnComfort's® soft footbed provides ideal cushioning and shock absorption

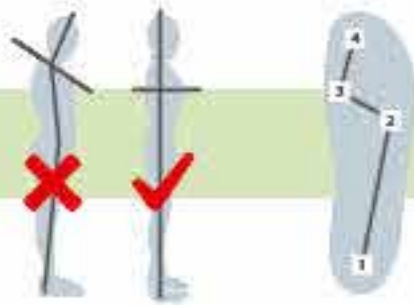
4 Wide and flat mid-section for secure and relaxed standing

5 healthful anatomical design provides optimal support, improves posture and promotes natural gait

6 Finest calfskin lining is particularly kind to the skin

7 Elastic toe cap means lasting freedom of movement for toes

8 rockered forefoot section encourages natural heel-to-toe rolling motion



The Finnamic rockered heel can support proper body posture.

The natural heel-to-toe rolling motion.

"Finnamic fits like a glove. I can feel how it supports the natural rolling motion of my feet."



CAMBRIDGE

1161	MEN FINNAMIC	
COLOUR	LEATHER	SIZE
black	Panama	6 - 12



SALO

2932	FINNAMIC	
COLOUR	LEATHER	SIZE
black	Nappa seda	2 - 9



HUELVA

1167	MEN FINNAMIC	
COLOUR	LEATHER	SIZE
nero	Metro	6 - 12



IKEBUKURO

2911	FINNAMIC	
COLOUR	LEATHER	SIZE
thyme	Tucson	3 - 8
black	Rodeobuk	2 - 9



WATFORD

1160	MEN FINNAMIC	
COLOUR	LEATHER	SIZE
teak	Panama	6 - 12
black	Panama	6 - 12



ZENO

5003	FINNSTRETCH	
COLOUR	LEATHER	SIZE
grey/black	Zebra/Nappa seda/Stretch	36 - 42



Soft materials, shock absorbing outsoles and a padded footbed let you stand and walk comfortably and meet your special orthopedic needs. Special consideration is given to the needs of those suffering from arthritis and diabetes. For example, the shoes offer plenty of room for the toes. The width of the forefoot is generously cut and the hold of the heel is very secure, ensuring optimal guidance for your foot.

FINNSTRETCH

FOR ESPECIALLY SENSITIVE FEET



ISERA

5004	FINNSTRETCH	
COLOUR	LEATHER	SIZE
black	Nappa seda/Stretch	36 - 42



TILBURG

5000	FINNSTRETCH	
COLOUR	LEATHER	SIZE
black	Nappa seda/Stretch	2½ - 9



ZWOLLE

5058	FINNSTRETCH	
COLOUR	LEATHER	SIZE
black	Nappa seda/Stretch	2 - 9



ALKMAAR

5051	FINNSTRETCH	
COLOUR	LEATHER	SIZE
black	Nappa seda/Stretch	2 - 9



IDEAL FOR PEOPLE WITH:

- Hallux Valgus (bunions)
- Hallux Rigidus (arthritis of the big toe)
- deformed toes
- swollen feet
- highly sensitive feet



LÖTTICH

5053	FINNSTRETCH	
COLOUR	LEATHER	SIZE
seashell	Perlato/Stretch	2 - 9
black	Nubuck/Stretch/Nappa seda	2 - 9



OSTENDE

5052	FINNSTRETCH	
COLOUR	LEATHER	SIZE
black	Nubuck/Stretch/Nappa seda	2 - 9
seashell	Perlato/Stretch	2 - 9





96519
rock
BearReno

PREVENTION SHOES

PREVENTION AND SUPPORT



AN OUNCE OF PREVENTION IS BETTER THAN A POUND OF CURE

Sensitive pressure points are unpleasant and make walking and standing difficult. Therefore, after intensive research in collaboration with doctors and orthopedic technicians, FinnComfort® has developed the prevention shoe.

These special FinnComfort® models are made of extra-soft leather. Additionally, our prevention shoes have no pressing seams, but greater width and additional cushioning in the upper and instep.

Heel counters lengthened on both sides give your foot optimal guidance and ensure a natural rolling movement.



96401

WOMEN PREVENTIVE		
COLOUR	LEATHER	SIZE
black	Nappa seda	35 - 43



96400

WOMEN PREVENTIVE		
COLOUR	LEATHER	SIZE
seashell	Nube	35 - 43
grey	Lopez	35 - 43



96402

WOMEN PREVENTIVE		
COLOUR	LEATHER	SIZE
black	Buggy	35 - 43

With soft calfskin lining



96524

WOMEN PREVENTIVE

COLOUR	LEATHER	SIZE
black	Nubuck/Nappa seda	3 - 8
rock	BearReno	3 - 8



96522

WOMEN PREVENTIVE

COLOUR	LEATHER	SIZE
rock	BearReno	3 - 8
black	Longbeach	2½ - 9

Velcro fastener turned around



96525

WOMEN PREVENTIVE

COLOUR	LEATHER	SIZE
rock	BearReno	3 - 8
black	Nubuck/Nappa seda	3 - 8

Velcro fastener turned around



96102

WOMEN PREVENTIVE

COLOUR	LEATHER	SIZE
black	Spona cowhide	35 - 43
seashell	Nube	35 - 43

Velcro fastener turned around



96519

WOMEN PREVENTIVE

COLOUR	LEATHER	SIZE
black	Longbeach	2½ - 9
rock	BearReno	3 - 8



96101

WOMEN PREVENTIVE

COLOUR	LEATHER	SIZE
seashell	Nube	35 - 43
black	Spona cowhide	35 - 43



96107

WOMEN PREVENTIVE

COLOUR	LEATHER	SIZE
black	Spona cowhide	35 - 43

Velcro fastener turned around

96200

PREVENTIVE

COLOUR	LEATHER	SIZE
tobacco	Nubuck carat	35 - 47



96203

MEN PREVENTIVE

COLOUR	LEATHER	SIZE
black	Buggy	39 - 47



96108

PREVENTIVE

COLOUR	LEATHER	SIZE
tobacco	Nubuck carat	35 - 47



96202

PREVENTIVE

COLOUR	LEATHER	SIZE
black	Spona cowhide	35 - 47

with loop straps



96109

PREVENTIVE

COLOUR	LEATHER	SIZE
black	Spona cowhide	39 - 47

Velcro fastener turned around

ALL FINNCOMFORT® SHOES SUITABLE FOR CUSTOM INSOLES



96100

PREVENTIVE

COLOUR	LEATHER	SIZE
black	Spona cowhide	35 - 50
coffee	Spona cowhide	35 - 50

Also available in PLUS SIZES



96103

PREVENTIVE

COLOUR	LEATHER	SIZE
coffee	Spona cowhide	35 - 50
black	Spona cowhide	35 - 50

Velcro fastener turned around

Also available in PLUS SIZES



With soft calfskin lining



With antiseptic Finntara lining in the forefoot area



96106

PREVENTIVE

COLOUR	LEATHER	SIZE
black	Spona cowhide	35 - 47

Velcro fastener turned around

97307

MEN PREVENTIVE

COLOUR	LEATHER	SIZE
black	Spona cowhide	39 - 50

Also available in PLUS SIZES



96104

PREVENTIVE

COLOUR	LEATHER	SIZE
black	Spona cowhide	35 - 47



97308

MEN PREVENTIVE

COLOUR	LEATHER	SIZE
black	Spona cowhide	39 - 50

Velcro fastener turned around

Also available in PLUS SIZES

SLIP THEM ON AND FEEL GOOD!

Numerous details custom attuned to tender, pressure-sensitive feet. Enjoy being light on your feet again!

96519
rock
BearReno
Page 64



97304

MEN PREVENTIVE

COLOUR	LEATHER	SIZE
black	Spona cowhide	5 - 12

Upper velcro fastener turned around



"The wonderfully soft prophylaxis shoes by FinnComfort® are a real relief for my sensitive feet. Walking and standing are no longer a problem."





97701
97911 (WITH REINFORCED MIDSOLE)
FINNORTHO

COLOUR	LEATHER	SIZE
coffee	Spona cowhide	6 - 12



FINNORTHO

SOFT THERAPY



97701
97911 (WITH REINFORCED MIDSOL)
FINNORTHO

COLOUR	LEATHER	SIZE
black	Spona cowhide	3 - 12



FINNORTHO BY PRESCRIPTION

189 million people worldwide live with diabetes. When the disease is diagnosed too late or poorly controlled, it may lead to the possibility of developing diabetic foot syndrome. Vascular and neurological abnormalities frequently damage the foot. Neuropathy, decreased blood circulation through arteries of the lower extremities, wounds that do not heal, even amputation of the foot is not uncommon in a diabetic. Well fitted and high quality extra depth therapeutic walking shoes can help counteract this syndrome before foot ulcers occur or an amputation becomes imminent. If you suffer from repeated foot sores or have wounds increasingly difficult to heal, then FinnOrtho by FinnComfort® might be the perfect shoe for you.

WALK MORE COMFORTABLY WITH DIABETIC FOOT SYNDROME



97700
97910 (WITH REINFORCED MIDSOLE)
FINNORTHO

COLOUR	LEATHER	SIZE
coffee	Spona cowhide	6 - 12
black	Spona cowhide	3 - 12

Velcro fastener turned around



- 1 **Anatomically designed, softly cushioned vamp** to protect toes and forefoot from pressure points
- 2 **Seamless textile lining in the forefoot** is antiseptic, breathable and easy-to-clean
- 3 **Wide opening** allows more room for easy foot entry
- 4 **Cushioned collar and tongue for extreme comfort** prevents the danger of pressure sores
- 5 **Extended heel counters** guarantee stability and heel motion guidance
- 6 **Raised rear topline** reduces heel slippage, even with thicker insoles
- 7 **Shock absorbing rocker sole** encourages a softer heel strike and smooth natural gait
- 8 **Wide and level surface** for a secure and relaxed stand
- 9 **Midsole/Optional reinforced rigid midsole** also available
- 10 **Rocker tip** promotes the natural forwardrolling action

An ultra soft footbed with an antiseptic lining and stable support system is available upon request and sold separately. Thus protected and minimally stressed, wounds can heal and infections can be avoided.



REMOVABLE FOOTBEDS



The Super Comfort Footbed

The anatomically-shaped Super Comfort Footbed enhances the natural heel-to-toe rolling motion via the heel, lateral foot, medial forefoot and big toe.

The all natural Classic Comfort Footbed may be removed overnight for airing. It can also be hand washed with mild soap and warm water 30°C / 86°F.

The Reflex Zone Massage Footbed

The reflex zone massage footbed is like a little daily spa treatment. It provides a gentle massage for the sole of your foot. Start by wearing them for five minutes a day, then gradually increase the time to as much as an hour a day (no more).

Reflex zone footbeds are not suitable for diabetics!

The Reflex Zone Massage Footbed can be replaced again with the Super Comfort Footbed. New footbeds can be obtained at any time from our specialist retailers.

THE FOOT'S NATURAL ROLLING MOTION



LONG LASTING AND COMFORTABLE



1 Pleasant to wear thanks to padded topline

2 The anatomically formed, extremely comfortable footbed makes **walking comfortable**.

3 Breathable thanks to finest leather lining

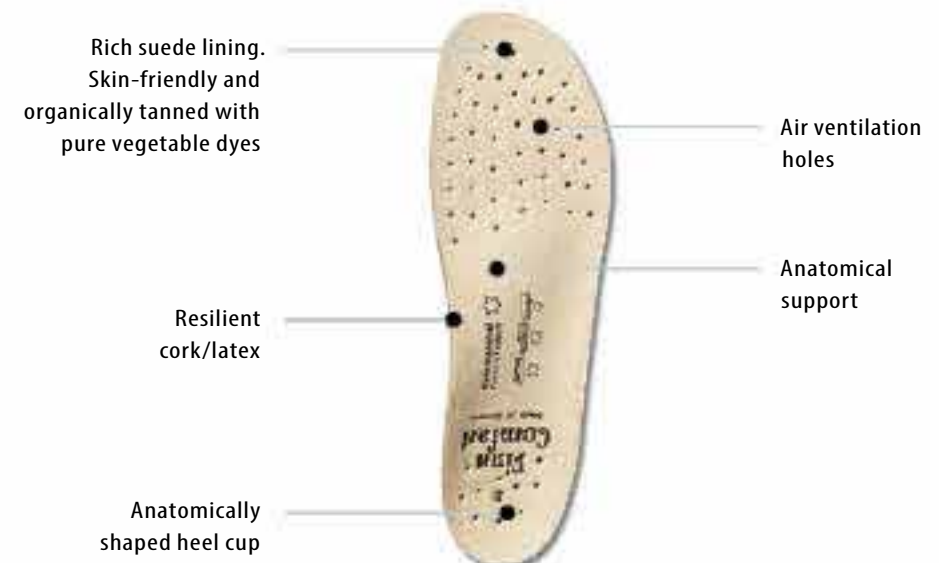
4 Flexible toecap eliminates pressure points

5 Foot motion guidance thanks to the solid heel counter

6 Every step is cushioned by the concave depression in the heel base and shock-absorbing materials in our outsoles

7 Air circulation and climate control thanks to ventilation channels in all closed hand-stitched shoes

SPECIAL FEATURES



SOCKS THAT SIMPLY FEEL GOOD

Active support and anatomically proper pressure distribution support healthy circulation and help prevent vein problems. These socks are also ideal against swelling of the legs when standing or sitting for long times and help prevent travel-related venous thrombosis. The comfortable stocking for everyday use.

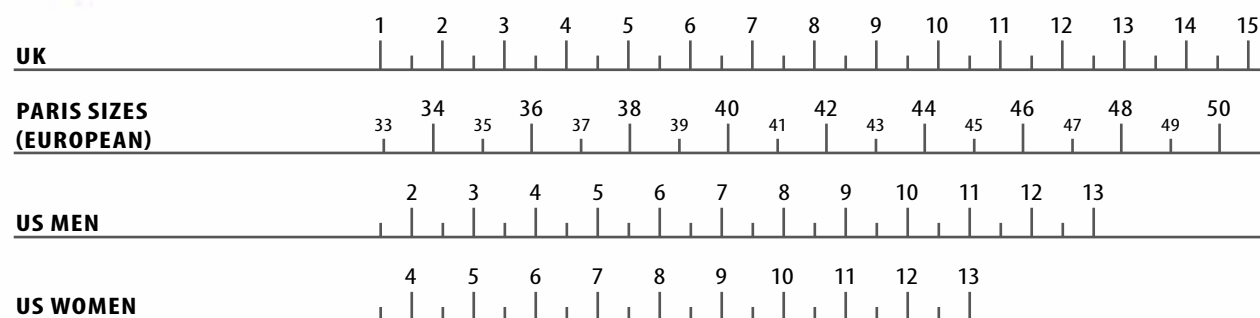
- ✓ High cotton content
- ✓ Cuff won't cut into the skin
- ✓ For men and women
- ✓ Made in Germany



Art. 7-2000-040 beige Art. 7-2000-060 marine Art. 7-2000-080 anthracite Art. 7-2000-099 black

Size: I Gr. 36 - 38
 Size: II Gr. 39 - 41
 Size: III Gr. 42 - 44
 Size: IV Gr. 45 - 47

COMPARATIVE SHOE SIZES



FITTING GUIDE

WOMEN	
Classic	Sylt, Korfu, Linz, Tirol Pattaya, Kos, Sansibar, Jamaika, Pisa, Kailua, Sumatra, Milos, Saloniki, Gomera, Usedom, Malaga, Belem, Roseau, Stanford, Java, Assuan, Aussee, Arlberg, Andermatt, Laval, Lexington Nadi, Palau
Classic-Soft	Menorca-Soft, Mira-Soft, Ventura-Soft, Sintra-Soft
Lady-Line	Ischia Elmhurst, Mineola, Lazio, Aleppo, Oviedo, Desenzano, Galway, Almeria, Beirut, Sestriere, Flachau, Biel, Sterzing, Minsk
City	Canzo, Samoa, Palmanova, Adana, Fünen Aquila, Nairobi, Narita, Mostar
City-Sport	Costa Pordenone, Soiano, Sarnia, Sidonia, Seoul, Acapulco, Vivero Arau
City-Sport-Soft	Brac-Soft
Fashion-Line	Verin, Calvia, Barca Soho
FinnStretch	Zeno, Isera, Tilburg Zwolle, Alkmaar, Lüttich, Ostende
FinnPlus	Royan, Reims
FinnSlim	Fumane, Lazise, Manerba Harumi, Ariano
FinnRelax	Barletta, Biscaya, Leon Mestre
Finnamic	Tiberias, Naxos, Columbia, Ikebukuro Salo
Preventive	96400, 96401, 96402, 96102, 96101, 96107 96524, 96525, 96519, 96522
MEN	
Classic	Leros, Korfu, Riad, Tunis, Sylt, Milton, Rialto, Baltrum, Tirol, Amalfi, Venedig, York, Vaasa, Köln, Baden, Linz Cortina, Grenoble
Classic-Soft	Danzig-Soft, Toro-Soft
Classic-Sport	Preston, Colorado, Braga, Nantes, Metz, Bagan, Norwich, Dijon Hannover, Whistler
City	Milano, Budapest, Kent, Toledo
City-Sport	Prezzo, Enfield, Bradford, Edmonton, Surfside, Cardiff, Syracuse, Alamo, Brest
FinnRelax	Kiruna, Chennai
Finnamic	Cambridge, Huelva, Watford
Preventive	96307, 97308 97304
MEN & WOMEN	
Hiking	Tibet, Murnau, Garmisch, Tölz, Bern
Finnamic	Yuma, Andros Corinth, Pretoria
Preventive	96200, 96203, 96108, 96202, 96109, 96100, 96103, 96106, 96104
FinnOrtho	97701, 97911, 97700, 97910

Normal feet	Normal to wide feet	Thin slender to medium feet	Sensitive feet	Finnamic	For sensitive feet – natural form with rocker sole
FinnStretch	FinnPlus	FinnSlim	FinnRelax	Hand-stitched sole	Cemented sole
					Heel height differential in mm

Photos: Held Print & Media Solution GmbH, Würzburg; Gerhard Hagen, Bamberg (p. 2); gettyimages/Westend61 (p. 3); Hagen Lehmann, Coburg (p. 17, 48); © iStock/Sam Edwards (p. 18); © iStock/PeopleImages (p. 43); Waldi Schuhfabrik GmbH, Haßfurt (p. 44); fotolia/THAWISAK (p. 44); Shutterstock.com (p. 44); © iStock/Alexpunker (p. 44); © iStock/Ridofranz (p. 55); © iStock/shapecharge (p. 59); fotolia/staras (p. 63); © iStock/shapecharge (p. 69); fotolia/koszivu (p. 72)



PREZZO
Page 41

FinnComfort® represents ultimate quality and traditional craftsmanship to the last detail. **Let one of our professional dealers advise you:** We have the right shoe for every foot – plus valuable tips on proper shoe care. So you can feel good in your FinnComfort® shoes for a long time.

THE FINEST COMFORT SHOES ON EARTH