

# FINNCOMFORT® AN INVESTMENT IN YOUR HEALTH AND WELL-BEING.



*FinnComfort® is meticulously handcrafted luxury European comfort footwear built to last. Although the durability of our shoes is almost legendary, new soles or footbeds may be required from time to time. FinnComfort® shoes are easily repairable and resoleable. Factory original parts and components are available from your authorized FinnComfort® dealer, who will also offer competent and reliable support in every other respect.*

## COMPARATIVE SHOE SIZES

UK	1	2	3	4	5	6	7	8	9	10	11	12	13	14	15			
Paris sizes (European)	33	34	35	36	37	38	39	40	41	42	43	44	45	46	47	48	49	50
US Men	2	3	4	5	6	7	8	9	10	11	12	13						
US Women	4	5	6	7	8	9	10	11	12	13								

# FinnComfort®

The Finest Comfort Shoes on Earth.



Models subject to change without notice



BAGAN, p. 44



MORE THAN JUST A SHOE: ATTRACTIVE. COMFORTABLE. HEALTHY.

Waldi Schuhfabrik GmbH · Postfach 1653 · 97433 Haßfurt/Main, Germany  
Telefon 0 95 21 / 9 233 0 · Telefax 0 95 21 / 9 233 233 · info@finncomfort.de  
www.finncomfort.de



# FinnComfort®

The Finest Comfort Shoes on Earth.

Catalogue 2015/16



About us 03

Women's Shoes 06

Slippers, Clogs and Sandals	06
Shoes	20
FinnSlim	28
Boots	30

Men's Shoes 32

Slippers, Clogs and Sandals	32
Shoes	38
Boots	47

Hiking and Trekking Shoes 48

Men & Women

Finnamic 50

Men & Women

Golf Shoes 54

Men & Women

FinnStretch 56

Women

Prevention Shoes 58

Men & Women

FinnOrtho 66

Men & Women

Service information 68

Comfort	69
Shoe sizes	70
Fitting guide	71



model ARIANO, p. 29



# OUR EXPERTISE FOR YOUR FEET.

## Traditional European craftsmanship that can be felt.

This is what characterizes FinnComfort® shoes. We develop all our shoes and manufacture them to perfection. This quality has been attracting customers in 48 countries around the world – roughly 40 percent of our production is exported.



Real leather

**Leather – vegetable tanned**  
In vegetable tanning, the tanning substances are extracted from various kinds of wood and bark. Guaranteed free of chemical additives and especially environmentally friendly – for a healthy (foot) climate.

**Quality at every step**  
This applies both to the manufacturing of our FinnComfort® shoes and to our corporate philosophy. Customer satisfaction is our main objective and the reason we continually invest in the future.



# MADE FROM NATURAL PRODUCTS



## Made in Germany.

Over 60 years of footwear manufacturing experience and comprehensive medical knowledge are your assurance that FinnComfort® will meet and exceed the highest quality expectations.

**Jute – the golden fiber**  
The glossy golden jute fibers in the FinnComfort® footbed ensure additional stabilization and better humidity absorption.



**Cork – the fascinating noble natural product**  
The cork oak produces something valuable: Cork bark, the trunk's protective layer that grows back all the time. This natural product is ground to granulated cork and provides the main component of each FinnComfort® footbed.

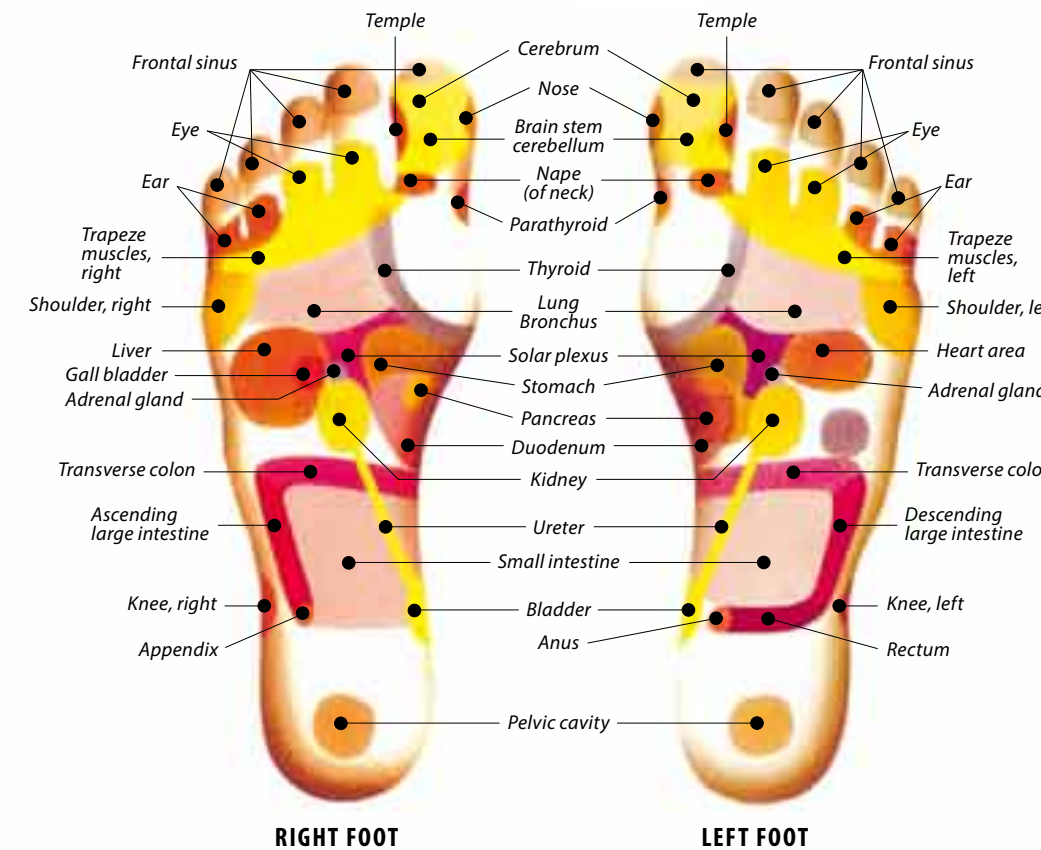


**Natural rubber – ecological and sustainable**  
The "tear of the tree", i.e. the milky sap, is extracted by grazing the bark of the rubber tree. In the FinnComfort® footbed, natural rubber serves as base for the elastic cushioning material as well as the binding and adhesive material for cork footbed and cover leather.



Numerous well thought out refinements guarantee durability and a high degree of comfort. It is our attention to details that makes FinnComfort® a product of unsurpassed excellence.

- Pleasant to wear** thanks to padded topline
- Healthy and comfortable walking** owing to the anatomically-shaped Super Comfort Footbed
- Breathable** thanks to finest leather lining
- Flexible toecap** eliminates pressure points
- Foot motion guidance** thanks to the solid heel counter
- Every step is cushioned** by the concave depression in the heel base and shock-absorbing materials in our outsoles
- Air circulation and climate control** thanks to ventilation channels in all closed hand-stitched shoes



# Fitting Guide

Last design	Sole	Heel Height differential	Shoe models
Women's Classic	[Yellow]	[Blue]	Korfu, Tirol, Sylt, Linz Sansibar, Jamaica, Pisa, Kos, Pattaya, Belem, Stanford, Java, Aussuan, Aussee, Andermatt, Saloniki, Milas, Gomera, Usedom, Malaga, Laval, Lexington
Women's Classic-Soft	[Yellow]	[Blue]	Caldera-Soft, Mira-Soft, Ventura-Soft, Menorca-Soft, Jalta-Soft, Sintra-Soft
Women's Lady-Line	[Yellow]	[Blue]	Ischia Aleppo, Oviedo, Almeria, Galway, Beirut, Flachau, Biel, Stanz, Sterzing, Sestriere, Minsk
Women's City	[Yellow]	[Blue]	Frisco, Lucia, Como, Santorin, Samoa, Adana, Alanya, Fünen Nairobi, Narita, Funchal, Savannah, Aquila, Messina, Mostar
Women's City-Sport	[Yellow]	[Blue]	Costa Empoli, Bayonne, Acapulco, Seoul, Vivero, Manaus
Women's City-Sport-Soft	[Yellow]	[Blue]	Aarau Brac-Soft, Giovo-Soft
Women's Fashion-Line	[Yellow]	[Blue]	Lombok, Barca Jerez, Soho
Women's FinnStretch	[Yellow]	[Blue]	Tilburg Alkmaar, Zwolle, Ostende, Lüttich
Women's FinnSlim	[Yellow]	[Blue]	Harumi, Ariano Lazise, Manerba
Women's FinnRelax	[Yellow]	[Blue]	Biscaya, Barletta, Leon
Women's Preventive	[Yellow]	[Blue]	96401, 96400, 96402, 96101, 96102, 96107 96515, 96516, 96519, 96522
Men's Classic	[Yellow]	[Blue]	Korfu, Kreta, Riad, Tirol, Amalfi, Venice, Tunis, Milton, Baltrum, Rialto, Sylt, York, Koeln, Baden, Vaasa, Linz Grenoble, Cortina
Men's Classic-Soft	[Yellow]	[Blue]	Danzig-Soft, Toro-Soft
Men's Classic-Sport	[Yellow]	[Blue]	Colorado, Preston, Nantes, Braga, Bagan, Norwich, Dijon, Metz Hannover, Whistler
Men's City	[Yellow]	[Blue]	Hilversum, Toledo, Kent, Budapest, Milano
Men's City-Sport	[Yellow]	[Blue]	Surfside, Syracuse, Cardiff, Alamo, Bradford, Clifton, Edmonton, Brest
Men's FinnRelax	[Yellow]	[Blue]	Chennai
Men's Finnamic	[Yellow]	[Blue]	Huelva, Watford, Cambridge
Men's Preventive	[Yellow]	[Blue]	96203 97307, 97308 97304
Men's/Women's Hikin	[Yellow]	[Blue]	Murnau, Tibet, Bern, Tölz, Garmisch
Men's/Women's Finnamic	[Yellow]	[Blue]	Yuma, Andros, Tiberias Naxos, Carinth, Ikebukuro, Pretoria
Men's/Women's Golf	[Yellow]	[Blue]	Salo Augusta, Andrews
Men's/Women's Preventive	[Yellow]	[Blue]	96200, 96202, 96108, 96100, 96103, 96104, 96106
Men's/Women's FinnOrtho	[Yellow]	[Blue]	97700, 97910, 97701, 97911

[Yellow] Normal feet   
 [Yellow] Normal to wide feet   
 [Yellow] Thin slender to medium feet   
 [Yellow] Sensitive feet   
 [Yellow] Finnamic   
 [Yellow] For sensitive feet – natural form with rocker sole  
[Yellow] FinnStretch   
 [Yellow] FinnSlim   
 [Blue] FinnRelax   
 [Blue] Hand-stitched sole   
 [Blue] Cemented sole   
 [Green] Heel height differential in mm





Photos of the building: Gerhard Hagen, Bamberg

## DEAR CUSTOMERS,

Your satisfaction is top priority for us and your well-being is of utmost concern to us – because in our company, the customer is king! Our objective is to manufacture shoes that meet your expectations. To achieve this, we make **high demands to the development, fit, functionality and manufacturing of our shoes.**

FinnComfort® brand quality also means, however, **careful selection of raw materials** and the fulfillment of **strict quality standards** in the entire production process. We continuously test all shoes to check whether our high quality requirements are fulfilled and **ecologically friendly conditions** are being met.

All shoes are developed by FinnComfort® itself and **made in Germany**, because only this way we have the means to guarantee the quality of our products all the time.

To make your wish of **complaint-free walking pleasure** become even more a reality, our employees are always looking for new product ideas. We are passionate manufacturers of comfortable shoes and are delighted when every customer wears them with a smile.

**We are delighted when our customers feel well.**



Ralph Wolter



"A gentle feel-good feeling for my feet."

# SOFT

All SOFT models are made with the tried and tested, soft FinnComfort® SOFT footbed.



**CALDERA-SOFT\*** 82583 Form »Classic-Soft«

Colour	Leather	Sizes
jeans	Fenell	34 - 43
white	Nappa	34 - 43



**MIRA-SOFT\*** 82582 Form »Classic-Soft«

Colour	Leather	Sizes
black	Buggy/ Textured patent	34 - 43
red/flamme	Venice/ Textured patent	36 - 42



model Caldera-Soft



**VENTURA-SOFT\*** 82568 Form »Classic-Soft«

Colour	Leather	Sizes
ocean	Light	34 - 43
monzared	Nubuck	36 - 42
black	Longbeach	34 - 43



**MENORCA-SOFT\*** 82564 Form »Classic-Soft«

Colour	Leather	Sizes
red	Light	34 - 43
black	Nappa seda	34 - 43
atlantic	Venice	36 - 42







**SANSIBAR** 2550

Form »Classic«

Colour	Leather	Sizes
black	Nappa seda	34 - 45
blue	Missouri	34 - 43
white	Nappa	34 - 43
red	Venice	36 - 42



**KOS**

2554

Form »Classic«

Colour	Leather	Sizes
rock	Sartor	34 - 43
black/jasmin	Nappa seda/Okapi	34 - 45



**JAMAICA**

2519

Form »Classic«

Colour	Leather	Sizes
black	Kenia/Buggy	34 - 43
fire	Mock croc	34 - 43



**PATTAYA**

2558

Form »Classic«

Colour	Leather	Sizes
white	Nappa	34 - 43
espresso	Corten	34 - 43
black	Nappa seda	34 - 43



**PISA**

2501

Form »Classic«

Colour	Leather	Sizes
bordeaux	Textured patent	34 - 43
white	Nappa	34 - 43
blue	Nappa	34 - 43
black	Nappa seda/ Textured patent	34 - 43
blue	OldBrass	36 - 42



**KORFU**

1508

Form »Classic«

Colour	Leather	Sizes
white	Nappa	35 - 47
marine	Buggy	35 - 47
tobacco	Nubuck carat	35 - 50
black	Bison	35 - 50







More comfort with **exchangeable insoles** from FinnComfort®. For more information see page 68.



model Frisco

**FRISCO** 2670 Form »City«  
 Colour Leather Sizes  
 negro/black Mercur/Nubuck 2 - 9  
 taupe Equipe 3 - 8

**LUCIA** 2676 Form »City«  
 Colour Leather Sizes  
 flamme Textured patent 3 - 8



**BELEM** 2555 Form »Classic«  
 Colour Leather Sizes  
 black Nappa seda 34 - 43



**COMO** 2602 Form »City«  
 Colour Leather Sizes  
 vino/flamme Mamba/Bali 2 - 9  
 baltic/blue Nubuck/Mock croc 2 - 9  
 black Mock croc 2 - 9



**STANFORD** 2552 Form »Classic«  
 Colour Leather Sizes  
 red Venice 36 - 42  
 bronze Gotico 34 - 43  
 black Nappa seda 34 - 45

SOME SHOES AVAILABLE IN PLUS SIZES





**JAVA** 2520 Form »Classic«  
 Colour ocean Leather Light Sizes 35 - 42



**ASSUAN** 2525 Form »Classic«  
 Colour white Leather Perlato Sizes 34 - 43



**AUSSEE** 2526 Form »Classic«  
 Colour darkblue black white Leather Montana Nappa seda Nappa Sizes 34 - 43



# FELT CLOGS

"Warm and cozy at home."



**ANDERMATT** 6550 Form »Classic«  
 Colour cassis darkblue Material Felt Felt Sizes 36 - 42 36 - 42

ALSO AVAILABLE IN PLUS SIZES

**TIROL** 6500 Form »Classic«  
 Colour anthracite Material Felt Sizes 36 - 47







All SOFT models are made with the tried and tested, soft FinnComfort® **SOFT** footbed.



**SANTORIN** 2667 Form »City«  
 Colour Leather Sizes  
 flamme Textured patent 2 - 9  
 atlantic Venice 2 - 9



**JALTA-SOFT\*** 82586 Form »Classic-Soft«  
 Colour Leather Sizes  
 black Nappa seda 34 - 43  
 rock Sartor 34 - 43



**SAMOA** 2664 Form »City«  
 Colour Leather Sizes  
 black Nappa seda 2 - 9



**SINTRA-SOFT\*** 82585 Form »Classic-Soft«  
 Colour Leather Sizes  
 black Nappa seda 34 - 43  
 taupe Luxperl 34 - 43



**ADANA** 2660 Form »City«  
 Colour Leather Sizes  
 espresso Corten 2 - 9  
 black Nappa seda 2 - 9





**ALANYA** 2677 Form »City«  
 Colour Leather Sizes  
 fango Pony 3 - 8



model Barca

**FÜNEN** 2666 Form »City«  
 Colour Leather Sizes  
 silver Luxury 2 - 9   
 black Nappa seda 2 - 9



**LOMBOK** 2803 Form »Fashion-Line«  
 Colour Leather Sizes  
 black PlisseeLight 34 - 43   
 taupe Equipe 34 - 43



**ISCHIA** 2106 Form »Lady-Line«  
 Colour Leather Sizes  
 black Buggy 2½ - 9



**BARCA** 2804 Form »Fashion-Line«  
 Colour Leather Sizes  
 black Textured patent 34 - 43   
 azur Nubuck 36 - 42



**COSTA** 2380 Form »City-Sport«  
 Colour Leather Sizes  
 jeans Fenell 3 - 8   
 black Buggy 2 - 9







**SALONIKI** 2557 Form »Classic«

Colour	Leather	Sizes
black/ jasmin	Nappa seda/ Okapi	34 - 45
red/jasmin	Fresco/Okapi	34 - 43



**MILOS** 2560 Form »Classic«

Colour	Leather	Sizes
white	Nappa	34 - 43
black	Nappa seda	34 - 43
coffee	Palmer	34 - 43



**GOMERA** 2562 Form »Classic«

Colour	Leather	Sizes
black	PlisseeLight	34 - 43
taupe	Equipe	34 - 43
red	Venice	36 - 42



Handcraft that can be felt –  
"Made in Germany".



**SYLT** 2509 Form »Classic«

Colour	Leather	Sizes
white	Nappa	35 - 47
black	Nubuck	35 - 42



**USEDOM** 2534 Form »Classic«

Colour	Leather	Sizes
black	Nappa seda	34 - 43
white	Nappa	34 - 43



**MALAGA** 2515 Form »Classic«

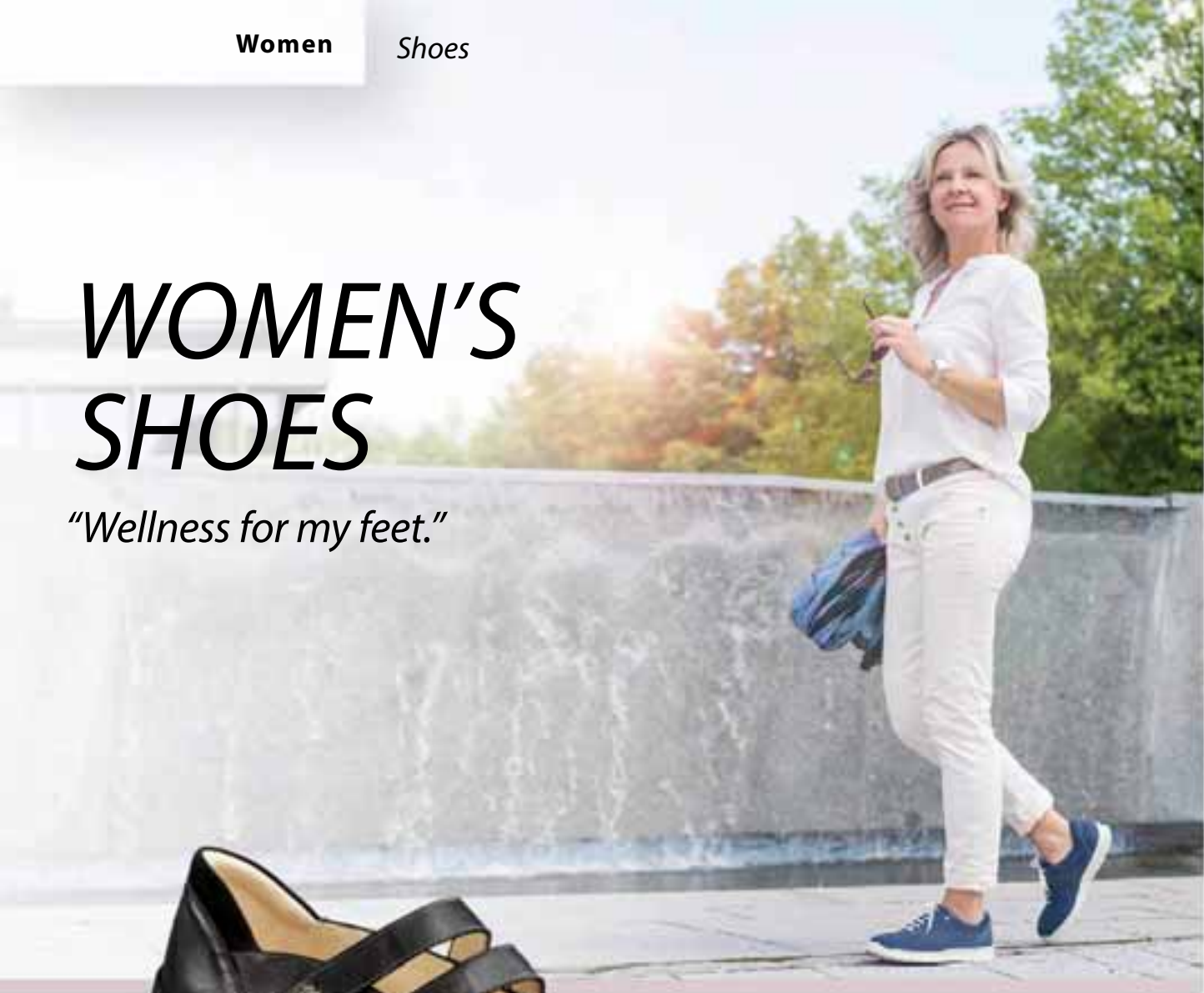
Colour	Leather	Sizes
black	Buggy	35 - 42





# WOMEN'S SHOES

"Wellness for my feet."



model Barletta



## JEREZ

Colour	Leather	Form »Fashion-Line«
black	Nappa seda/Nubuck	Sizes 35 - 43



## SOHO

Colour	Leather	Form »Fashion-Line«
navy/jasmin black	NubuckRona/Okapi Nappa seda/Buggy	Sizes 35 - 43



## BISCAYA

2850	Form »FinnRelax«	
Colour	Leather	Sizes
black/shadow ocean	Rodeobuk/Nubuck Tucson	35 - 43 36 - 42



## BARLETTA

2851	Form »FinnRelax«	
Colour	Leather	Sizes
electro rock indianred	Nubuck Nubuck Longbeach	35 - 43 35 - 43 36 - 42



## LEON

2854	Form »FinnRelax«	
Colour	Leather	Sizes
black	Buggy	35 - 43







**EMPOLI** 2360 Form »City-Sport«  
 Colour Leather Sizes  
 black Nubuck/ Nappa seda 2 - 9



**NAIROBI** 3558 Form »City«  
 Colour Leather Sizes  
 taupe Equipe 2½ - 9  
 black Nappa seda/ Nubuck 2½ - 9



**BAYONNE** 2351 Form »City-Sport«  
 Colour Leather Sizes  
 black Calypso 2 - 9



**NARITA** 3551 Form »City«  
 Colour Leather Sizes  
 black Nappa seda 2½ - 9

**FUNCHAL** 3566 Form »City«  
 Colour Leather Sizes  
 black Nappa seda/ Nubuck 2 - 9



**ACAPULCO** 2489 Form »City-Sport«  
 Colour Leather Sizes  
 blue/royal Nappa/Nubuck 2½ - 9  
 black Nappa seda/ Nubuck 2½ - 9  
 darkbrown/ nutella Nappa seda/ Nubuck 2½ - 9



**SEOUL** 2483 Form »City-Sport«  
 Colour Leather Sizes  
 black Nappa seda/ Nubuck 2½ - 9



**SAVANNAH** 3573 Form »City«  
 Colour Leather Sizes  
 coffee/ chestnut Masque/Plavajo 2 - 9





**AQUILA** 3594 Form »City«  
 Colour Leather Sizes  
 black Nubuck 3 - 8  
 rock Nubuck 3 - 8



**BRAC-SOFT\*** 82362 Form »City-Sport-Soft«  
 Colour Leather Sizes  
 lake Nubuckvienna 3 - 8



**CIOVO-SOFT\*** 82358 Form »City-Sport-Soft«  
 Colour Leather Sizes  
 creme Memphis 2 - 9



**MESSINA** 3569 Form »City«  
 Colour Leather Sizes  
 black Textured patent/ 2 - 9  
 Buggy



More comfort with **exchangeable insoles** from FinnComfort®. For more information see page 68.

**MOSTAR** 3598 Form »City«  
 Colour Leather Sizes  
 black Nubuck 2 - 9  
 (Leather lining)



Handcraft that can be felt – “Made in Germany”.



**VIVERO** 2353 Form »City-Sport«  
 Colour Leather Sizes  
 black Nappa seda 2 - 9



**MANAUS** 2429 Form »City-Sport«  
 Colour Leather Sizes  
 black Nappa seda 2 - 9





**ALEPPO** 2110 Form »Lady-Line«  
 Colour Leather Sizes  
 black Nappa seda 2½ - 9  
 sand Tucson 2½ - 9



**BEIRUT** 2173 Form »Lady-Line«  
 Colour Leather Sizes  
 black Nappa seda/ Textured patent 2½ - 9



**OVIEDO** 2152 Form »Lady-Line«  
 Colour Leather Sizes  
 beach/seashell Textured patent/ Perlato 2½ - 9  
 nero/black Textured patent/ Nappa seda 2½ - 9



**LAVAL** 2058 Form »Classic«  
 Colour Leather Sizes  
 campari Arena 34 - 43  
 black Nappa seda 34 - 43



**ALMERIA** 2206 Form »Lady-Line«  
 Colour Leather Sizes  
 black Longbeach 3 - 8



**LEXINGTON** 2056 Form »Classic«  
 Colour Leather Sizes  
 black Plissee 34 - 43  
 cognac PlisseeLight 34 - 43



**GALWAY** 2188 Form »Lady-Line«  
 Colour Leather Sizes  
 black Nappa seda 2 - 9



**LINZ** 1008 Form »Classic«  
 Colour Leather Sizes  
 black/brown Nubuck/Nevada (Leather lining) 35 - 50

ALSO AVAILABLE IN PLUS SIZES





# FINN SLIM

"Just perfect for my slender feet."

**FinnSlim** offers remarkable well-being for **especially slender feet**. The extra narrow cut pampers delicate feet through optimal comfort. These models are suitable for all those who walk on narrow feet.



**LAZISE\*** 3430      Form »FinnSlim«  
 Colour      Leather      Sizes  
 darkblue      Buggy      2 - 9



**MANERBA\*** 3431      Form »FinnSlim«  
 Colour      Leather      Sizes  
 black      Buggy      2 - 9



model Harumi

**HARUMI\*** 3404      Form »FinnSlim«  
 Colour      Leather      Sizes  
 black      Nappa seda      2 - 9



**ARIANO\*** 3400      Form »FinnSlim«  
 Colour      Leather      Sizes  
 marder      Bear      2 - 9   
 black      Longbeach      2 - 9





# WOMEN'S BOOTS

Comfortably protected through the winter.



**AARAU** 2490 Form »City-Sport«  
 Colour Leather Sizes  
 black Nappa seda 2½ - 9  
 (Leather lining)



**FLACHAU** 2166 Form »Lady-Line«  
 Colour Leather Sizes  
 black Nappa seda/Frog 2½ - 9  
 (Woolen lining)



**BIEL** 2168 Form »Lady-Line«  
 Colour Leather Sizes  
 black Nappa seda/Frog 2½ - 9  
 (Woolen lining)



**STANZ** 2209 Form »Lady-Line«  
 Colour Leather Sizes  
 asphalt Patagonia 3 - 8  
 (Woolen lining)



**SESTRIERE** 2200 Form »Lady-Line«  
 Colour Leather Sizes  
 black SoftNappa 2 - 9  
 (Woolen lining)

**MINSK** 2175 Form »Lady-Line«  
 Colour Leather Sizes  
 black Nappa seda 2½ - 9  
 (Lambskin lined)

The lateral zipper facilitates putting them on and taking them off.



**Adjustable calf width:** this boot adapts to different calf widths through adjustable lacing. The lateral zipper facilitates putting them on and taking them off.



**STERZING** 2210 Form »Lady-Line«  
 Colour Leather Sizes  
 black Nappa seda/Nubuck 2 - 9  
 (Woolen lining)





# MEN'S SLIPPERS

"... and my feet go on vacation."



More comfort with **exchangeable insoles** from FinnComfort®. For more information see page 68.



**KORFU** 1508 Form »Classic«  
 Colour Leather Sizes  
 tobacco Nubuck carat 35 - 50  
 marine Buggy 35 - 47  
 white Nappa 35 - 47  
 black Bison 35 - 50



**KRETA** 1500 Form »Classic«  
 Colour Leather Sizes  
 black Bosco 35 - 47



**RIAD** 1505 Form »Classic«  
 Colour Leather Sizes  
 black Buggy 35 - 47  
 brown Karbo 39 - 47







**TIROL** 6500 Form »Classic«  
 Colour anthracite Material Felt Sizes 36 - 47



Handcraft that can be felt –  
 “Made in Germany”.



All SOFT models are made with the tried and tested, soft FinnComfort® **SOFT** footbed.



**AMALFI** 1515 Form »Classic«  
 Colour black malt Leather Carat rangun Iowa Sizes 35 - 50



**VENICE** 1504 Form »Classic«  
 Colour blue black white Leather Nappa Bosco Nappa Sizes 35 - 47



**DANZIG-SOFT\*** 81529 Form »Classic-Soft«  
 Colour onion black Leather Salsa Bison Sizes 39 - 47



**TORO-SOFT\*** 81528 Form »Classic-Soft«  
 Colour wood black Leather Cherokee Cherokee Sizes 39 - 47



ALSO AVAILABLE IN PLUS SIZES



**TUNIS** 1511 Form »Classic«  
 Colour Leather Sizes  
 havanna Buggy 39 - 50



**RIALTO** 1523 Form »Classic«  
 Colour Leather Sizes  
 black Bison 39 - 47



**MILTON** 1520 Form »Classic«  
 Colour Leather Sizes  
 nut Bison 39 - 47



**SYLT** 2509 Form »Classic«  
 Colour Leather Sizes  
 chestnut white Palace Nappa 39 - 47  
 35 - 47



Made in Germany



**COLORADO** 1150 Form »Classic-Sport«  
 Colour Leather Sizes  
 havanna/black Buggy 6 - 12



**BALTRUM** 1518 Form »Classic«  
 Colour Leather Sizes  
 black Nappa 35 - 47  
 nut Kansas 35 - 47



**PRESTON** 1152 Form »Classic-Sport«  
 Colour Leather Sizes  
 chestnut Buttero 6 - 12





# SHOES

"Walk in perfect comfort."



**SURFSIDE** 1293      Form »City-Sport«  
 Colour      Leather      Sizes  
 black      Nappa seda      6 - 12  
 range      Fores      6 - 12



model Chennai

**CHENNAI** 1350      Form »FinnRelax«  
 Colour      Leather      Sizes  
 cinnamon      Longbeach      6 - 12  
 black      Buggy      6 - 12



**SYRACUSE** 1281      Form »City-Sport«  
 Colour      Leather      Sizes  
 black      Nappa seda      6 - 12  
 teak      Piper      6 - 12



More comfort with **exchangeable insoles** from FinnComfort®. For more information see page 68.



**CARDIFF** 1284      Form »City-Sport«  
 Colour      Leather      Sizes  
 black      Nappa seda      6 - 12



**ALAMO** 1288      Form »City-Sport«  
 Colour      Leather      Sizes  
 black      Bison/Buggy      6 - 12  
 chestnut/cigar      Plavajo/Palmer      6 - 12



**BRADFORD** 1270

Colour: wood  
Leather: Cherokee

Form »City-Sport«

Sizes: 6 - 12



model Bradford

**CLIFTON** 1255

Colour: ebony  
Leather: Buggy

Form »City-Sport«

Sizes: 6 - 12



**BREST** 1250

Colour: black  
Leather: Siena

Form »City-Sport«

Sizes: 6 - 12



**HILVERSUM** 1209

Colour: black  
Leather: Trento

Form »City«

Sizes: 6 - 12



**EDMONTON** 1273

Colour: black, sudan  
Leather: Spona cowhide, Rumba

Form »City-Sport«

Sizes: 6 - 12



**TOLEDO** 1205

Colour: black  
Leather: Trento

Form »City«

Sizes: 6 - 12







**KENT** 1204 Form »City«  
 Colour Leather Sizes  
 black Trento 6 - 12



**BUDAPEST** 1212 Form »City«  
 Colour Leather Sizes  
 black Montana 6 - 12



**MILANO** 1201 Form »City«  
 Colour Leather Sizes  
 black Montana 5½ - 12  
 chianti Montana 5½ - 12



model Hilversum, p. 41



**HANNOVER** 1196 Form »Classic-Sport«  
 Colour Leather Sizes  
 black Montana 6 - 12

**NANTES** 1107 Form »Classic-Sport«  
 Colour Leather Sizes  
 black Bison 6 - 12



**BRAGA** 1108 Form »Classic-Sport«  
 Colour Leather Sizes  
 black Bison 5½ - 12





**BAGAN** 1114 Form »Classic-Sport«

Colour	Leather	Sizes
black	Buggy	6 - 12



**NORWICH** 1111 Form »Classic-Sport«

Colour	Leather	Sizes
espresso/coffee	Glover/Nubuck	6 - 12
black	Montana	6 - 12



**DIJON** 1101 Form »Classic-Sport«

Colour	Leather	Sizes
teak	Idaho	5½ - 15
black	Trento	5½ - 15

ALSO AVAILABLE IN PLUS SIZES

**METZ** 1100 Form »Classic-Sport«

Colour	Leather	Sizes
black	Carat rangun	6 - 12



**YORK** 1005 Form »Classic«

Colour	Leather	Sizes
espresso	Togo	35 - 50
black	Togo	35 - 50

ALSO AVAILABLE IN PLUS SIZES



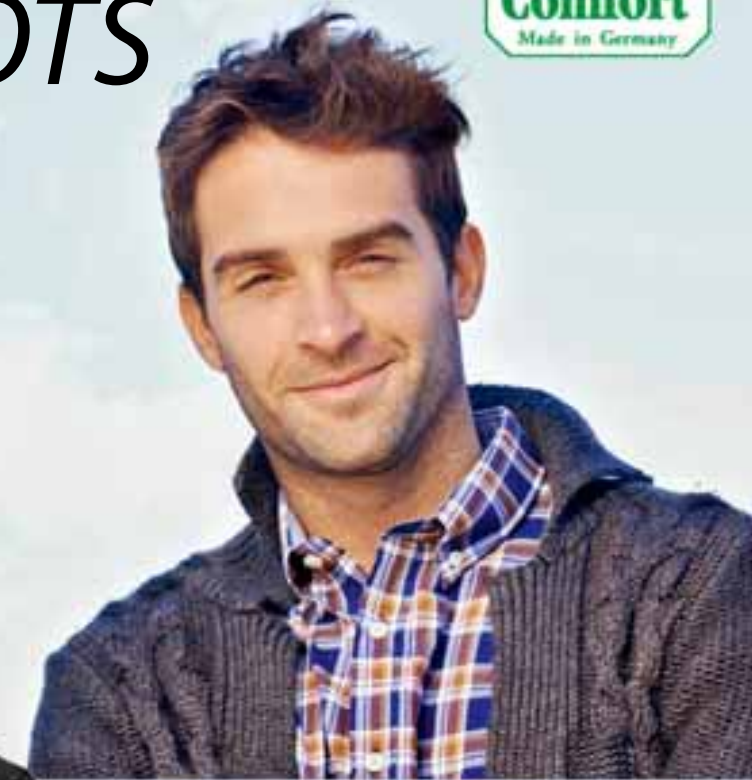
**KOELN** 1019 Form »Classic«

Colour	Leather	Sizes
black	Togo	39 - 47
espresso	Togo	39 - 47



# MEN'S BOOTS

"My reliable companion in every kind of weather."



**BADEN** 1009 Form »Classic«  
 Colour Leather Sizes  
 coffee Nubuckvienna 35 - 47  
 white Nappa 35 - 47  
 black Ranger 35 - 47



**VAASA** 1000 Form »Classic«  
 Colour Leather Sizes  
 black Nappa 35 - 50  
 white Nappa 35 - 47  
 coffee Full grain 35 - 50

SOME SHOES AVAILABLE IN PLUS SIZES



**LINZ** 1008 Form »Classic«  
 Colour Leather Sizes  
 black/brown Nubuck/Nevada 35 - 50  
 (Leather lining)

ALSO AVAILABLE IN PLUS SIZES



**WHISTLER** 1194 Form »Classic-Sport«  
 Colour Leather Sizes  
 black Longbeach 6 - 12  
 (Woolen lining)



**GRENOBLE** 4000 Form »Classic«  
 Colour Leather Sizes  
 black Nappa 39 - 47  
 (Lambskin lined)



**CORTINA** 4001 Form »Classic«  
 Colour Leather Sizes  
 black Cordoba 39 - 47  
 (Lambskin lined)





# HIKING AND TREKKING SHOES

"Comfortable and secure over all terrain."



**BERN** 3810 Form »Classic-Sport«  
 Colour Leather Sizes  
 black Bosco (Leather lining) 3 - 12



**TÖLZ** 3910 Form »Classic-Sport«  
 Colour Leather Sizes  
 brown Bosco (Leather lining) 3 - 12



**MURNAU** 3813 Form »Classic-Sport«  
 Colour Leather Sizes  
 slate/black Neptun/Buggy (Lined with Sympatex) 3 - 12



**GARMISCH** 3911 Form »Classic-Sport«  
 Colour Leather Sizes  
 ebony/bark Chimera/Piper (Leather lining) 3 - 12



All shoes on this page are lined with waterproof Sympatex.

**TIBET** 3914 Form »Classic-Sport«  
 Colour Leather Sizes  
 slate/black Neptun/Buggy (Lined with Sympatex) 3 - 12



# FINNAMIC

Healthy footwear that promotes fitness and well-being



The **Finnamic shoe** reduce pressure while walking, accompanies and carries you through the day.

model Yuma



1. Rockered soles for gentle and cushioned walking



2. Wide and flat mid-section for secure and relaxed standing



3. Rockered forefoot section encourages a natural heel-to-toe rolling motion

**Finnamic shoes** are personal trainers for your feet. Gentle on joints, knees, disks and spine, they help tone and strengthen muscles to make you fit for the day's demands. Even around the clock. Step by step the convex sole design helps increase **strength and stamina**.



<b>YUMA</b>	1561	Form »Finnamic«
Colour	Leather	Sizes
lake/grey	Nubuckvienna/BearReno	36 - 42
grey/sandia	BearReno/Nubuck	36 - 42
black/olive	Buggy	35 - 47



<b>ANDROS</b>	1575	Form »Finnamic«
Colour	Leather	Sizes
atlantic	Venice	36 - 42
black	PlisseeLight	35 - 47



<b>TIBERIAS</b>	1586	Form »Finnamic«
Colour	Leather	Sizes
anthracite	Luxory	36 - 42



<b>NAXOS</b>	1551	Form »Finnamic«
Colour	Leather	Sizes
white/black	Nappa/Buggy	3 - 9



<b>CORINTH</b>	1550	Form »Finnamic«
Colour	Leather	Sizes
black	Buggy	3 - 12



## Finnamic. Simply healthier walking.

Our feet are part of the body that takes the most punishment. They carry our entire weight and are constantly stabilizing the body's center of gravity. Finnamic's rockered heel design encourages gentle and low-impact heel strike and gently and effortlessly guides the motion impulse from the lateral foot via the medial forefoot to the big toe. The broad, flat and stable mid-section relieves unnecessary strain on the foot while stabilizing the body. Finnamic provides optimum balance and fit.



The Finnamic rocker sole corrects poor posture and improves body alignment



The natural heel-to-toe rolling motion



Thanks to its unique design and sole concept, Finnamic shoes can be worn all day long problem free. Because the strain and relief phases alternate constantly, you can increase your fitness and vitality easily and in comfort.



<b>SALO</b>	2932	Form »Finnamic«
Colour	Leather	Sizes
black	Nappa seda	2 - 9
red	Venice	2 - 9
lake	Nubuckvienna	3 - 8



<b>HUELVA</b>	1167	Form »Men Finnamic«
Colour	Leather	Sizes
nero	Metro	6 - 12



<b>IKEBUKURO</b>	2911	Form »Finnamic«
Colour	Leather	Sizes
black	Rodeobuk	2 - 9
thyme	Tucson	3 - 8



<b>WATFORD</b>	1160	Form »Men Finnamic«
Colour	Leather	Sizes
black	Panama	6 - 12
teak	Panama	6 - 12



<b>PRETORIA</b>	2901	Form »Finnamic«
Colour	Leather	Sizes
white	Nappa	3 - 12
black	Buggy	3 - 12



<b>CAMBRIDGE</b>	1161	Form »Men Finnamic«
Colour	Leather	Sizes
black	Panama	6 - 12





# FINNCOMFORT® GOLF

*"Golf Without Handicaps."*



*Always on the green!*

**Now you can experience the carefree feeling of FinnComfort® while playing golf!**

**The matchless benefits include:**

- » **unexcelled comfort**
- » **a secure hold** and flawless fit

- » replaceable **Scorpion soft spikes** for unmatched traction and gripping power
- » suitable for custom orthoses (custom fitted shoe inserts)



**AUGUSTA** 6000 *Form »Golf«*

Colour	Leather	Sizes
white/fresh	Nappa/Selina	3 - 12
black	Montana	5 - 12
white/coffee	Nappa/Golf	3 - 12

**ANDREWS** 6002 *Form »Golf«*

Colour	Leather	Sizes
blue/white	Nappa	3 - 12
black	Montana	6 - 12





# FINNSTRETCH "Walk naturally."



For especially sensitive feet



**FinnStretch Shoes are ideal for customers with following conditions:**

- » Hallux Valgus (bunions)
- » Hallux Rigidus (arthritis of the big toe)
- » deformed toes
- » swollen feet
- » highly sensitive feet

Soft materials, shock absorbent soles and cushioned footbeds provide maximum comfort while fulfilling the orthopedic requirements specific to the conditions listed beside, thereby creating the foundation for unhampered and carefree mobility.

Our FinnStretch Collection is likewise tailored to ideally fulfill the needs of those suffering from rheumatism or diabetes. FinnStretch shoes have an ample toe box. The forefoot (vamp) width is generous and the heel fits securely to provide optimal foot motion guidance.



**TILBURG 5000** Form »FinnStretch«

Colour	Leather	Sizes
black	Nappa seda/Stretch	2½ - 9



**ALKMAAR 5051** Form »FinnStretch«

Colour	Leather	Sizes
seashell	Perlato/Stretch	2 - 9
black	Nappa seda/Stretch	2 - 9



**ZWOLLE 5058** Form »FinnStretch«

Colour	Leather	Sizes
black	Nappa seda/Stretch	2 - 9



**OSTENDE 5052** Form »FinnStretch«

Colour	Leather	Sizes
black	Nubuck/Stretch/ Nappa seda	2 - 9
seashell	Perlato/Stretch	2 - 9



**LÜTTICH 5053** Form »FinnStretch«

Colour	Leather	Sizes
black	Nubuck/Stretch/ Nappa seda	2 - 9
seashell	Perlato/Stretch	2 - 9





# PREVENTION SHOES

"A blessing for sensitive feet."

Developed in close collaboration with orthopedic specialists and physicians, **FinnComfort® prevention footwear offers numerous features and benefits** which address the problems of tender and pressure-sensitive feet. Enjoy walking in supreme comfort.



96402

Form »Women Preventive«

Colour *Leather*  
black *Buggy*

Sizes  
35 - 43



96401

Form »Women Preventive«

Colour *Leather*  
black *Nappa seda* 35 - 43



96200

Form »Preventive«

Colour *Leather*  
tobacco *Nubuck carat* 35 - 47



96400

Form »Women Preventive«

Colour *Leather*  
creme *Spona cowhide* 35 - 43



96202

Form »Prophylaxe«

Colour *Leather*  
black *Spona cowhide (with loop straps)*

Sizes  
35 - 47



With soft calfskin lining

With antiseptic Finntara lining in the forefoot area



# More fun when walking: Wear them and feel good!

With sensitive feet, you can be on the go without worry and enjoy the day. Numerous details embed the foot completely pressure-free, ensure support and a natural rolling movement. **For more joy when walking!**

**1** The fully cushioned forefoot protects against pressure points

**2** A footbed with soft cushioning allows you to walk on clouds

**3** Outstanding flexibility

**4** The two-sided extended heel counter ensures optimal support

**5** Reinforced padding in the knuckle area protects against friction

**6** Fully lined interior

**7** The cushioned and reinforced tongue takes the load off the instep area

**8** Generous forefoot space for maximum wearing comfort

**9** No hard toe contact caused by soft front cap



96515

Form »Women Preventive«

Colour black  
Leather Nappa seda (Velcro fastener turned around)

Sizes 2½ - 9



96516

Form »Women Preventive«

Colour black  
Leather Nappa seda

Sizes 2½ - 9



96519

Form »Women Preventive«

Colour black  
Leather Longbeach

Sizes 2½ - 9



96522

Form »Women Preventive«

Colour black  
Leather Longbeach

Sizes 2½ - 9



Walk gently embedded, softly cushioned and carefree through the day!





96108

Form »Preventive«

Colour Leather Sizes  
tobacco Nubuck carat 35 - 47



96101

Form »Women Preventive«

Colour Leather Sizes  
black Spona cowhide 35 - 43  
creme Spona cowhide 35 - 43



96100

Form »Preventive«

Colour Leather Sizes  
black Spona cowhide 35 - 50  
coffee Spona cowhide 35 - 50



ALSO AVAILABLE IN PLUS SIZES

96102

Form »Women Preventive«

Colour Leather Sizes  
creme Spona cowhide 35 - 43  
black Spona cowhide 35 - 43  
(Velcro fastener turned around)



96107

Form »Women Preventive«

Colour Leather Sizes  
black Spona cowhide 35 - 43  
(Velcro fastener turned around)



96103

Form »Preventive«

Colour Leather Sizes  
coffee Spona cowhide 35 - 50  
black Spona cowhide 35 - 50  
(Velcro fastener turned around)



ALSO AVAILABLE IN PLUS SIZES





96203

Form »Men Preventive«

Colour	Leather	Sizes
black	Buggy	39 - 47



96104

Form »Preventive«

Colour	Leather	Sizes
black	Spona cowhide	35 - 47



Made in Germany

All FinnComfort® footwear can accommodate custom orthotics.



ALSO AVAILABLE IN PLUS SIZES

97307

Form »Men Preventive«

Colour	Leather	Sizes
black	Spona cowhide	39 - 50



96106

Form »Preventive«

Colour	Leather	Sizes
black	Spona cowhide (Velcro fastener turned around)	35 - 47



ALSO AVAILABLE IN PLUS SIZES

97308

Form »Men Preventive«

Colour	Leather	Sizes
black	Spona cowhide	39 - 50



97304

Form »Men Preventive«

Colour	Leather	Sizes
black	Spona cowhide (uppermost Velcro strap turned around)	5 - 12

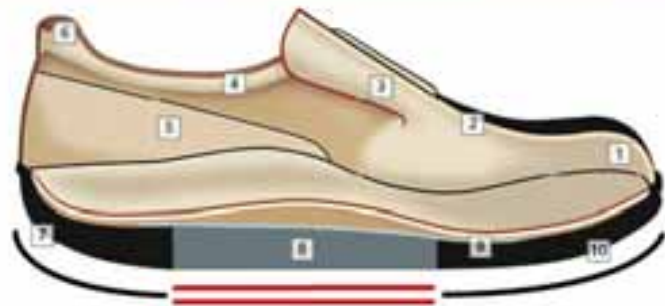






# FINNORTHO

"... and our feet are healthy and well."



- 1 Anatomically designed, softly cushioned vamp** to protect toes and forefoot from pressure points
- 2 Seamless textile lining in the forefoot** is antiseptic, breathable and easy-to-clean
- 3 Wide opening** allows more room for easy foot entry
- 4 Cushioned collar and tongue for extreme comfort** prevents the danger of pressure sores

- 5 Extended heel counters** guarantee stability and heel motion guidance
- 6 Raised rear topline** reduces heel slippage, even with thicker insoles
- 7 Shock absorbing rocker sole** encourages a softer heel strike and smooth natural gait
- 8 Wide and level surface** for a secure and relaxed stand
- 9 Midsole/Optional reinforced rigid midsole** also available
- 10 Rocker tip** promotes the natural forwardrolling action

### Comparable shoe lengths for men's and women's shoes

UK Size	3	3½	4	4½	5	5½	6	6½	7	7½	8	8½	9	9½	10	10½	11	11½	12
Euro Size	35,5	36	37	37,5	38	38,5	39	40	40,5	41	42	42,5	43	44	44,5	45	46	46,5	47

189 million people worldwide live with diabetes. When the disease is diagnosed too late or poorly controlled, it may lead to the possibility of developing diabetic foot syndrome. Vascular and neurological abnormalities caused by diabetes frequently damage the foot. Neuropathy, decreased blood circulation through arteries of the lower extremities, wounds that do not heal, even amputation of the foot is not uncommon in a diabetic. Well fitted and high quality extra depth therapeutic walking shoes can help counteract this syndrome before foot ulcers occur or an amputation becomes imminent. If you suffer from repeated foot sores or have wounds increasingly difficult to heal, then FinnOrtho by FinnComfort® is the perfect shoe for you. With all the features and advan-

tages of FinnComfort's® popular Prevention Series for sensitive feet, our new FinnOrtho collection includes the benefit of the specifically designed FinnComfort® rocker sole which reduces pressure on the foot and stimulates circulation. The natural rolling motion is maintained even in combination with the optional rigid midsole which supports the foot by absorbing static and dynamic stress, preventing harmful isolated pressure points and stabilizing the gait of partial amputees. In addition, a NEW ultra soft footbed with an antiseptic lining and stable support system is available upon request and sold separately. Thus protected and minimally stressed, wounds can heal and dangerous infections can be avoided.



**97700**      Form »FinnOrtho«  
**97910**      (with rigid reinforced midsole)

Colour	Leather	Sizes	
black	Spona cowhide	3 - 12	☀️ 🌊 ❄️
coffee	Spona cowhide	6 - 12	
creme	Spona cowhide	3 - 9	

(Velcro fastener turned around)



**97701**      Form »FinnOrtho«  
**97911**      (with rigid reinforced midsole)

Colour	Leather	Sizes	
creme	Spona cowhide	3 - 9	☀️ 🌊 ❄️
black	Spona cowhide	3 - 12	
coffee	Spona cowhide	6 - 12	



☀️ With antiseptic Finntara lining in the forefoot area



# SERVICE INFORMATION

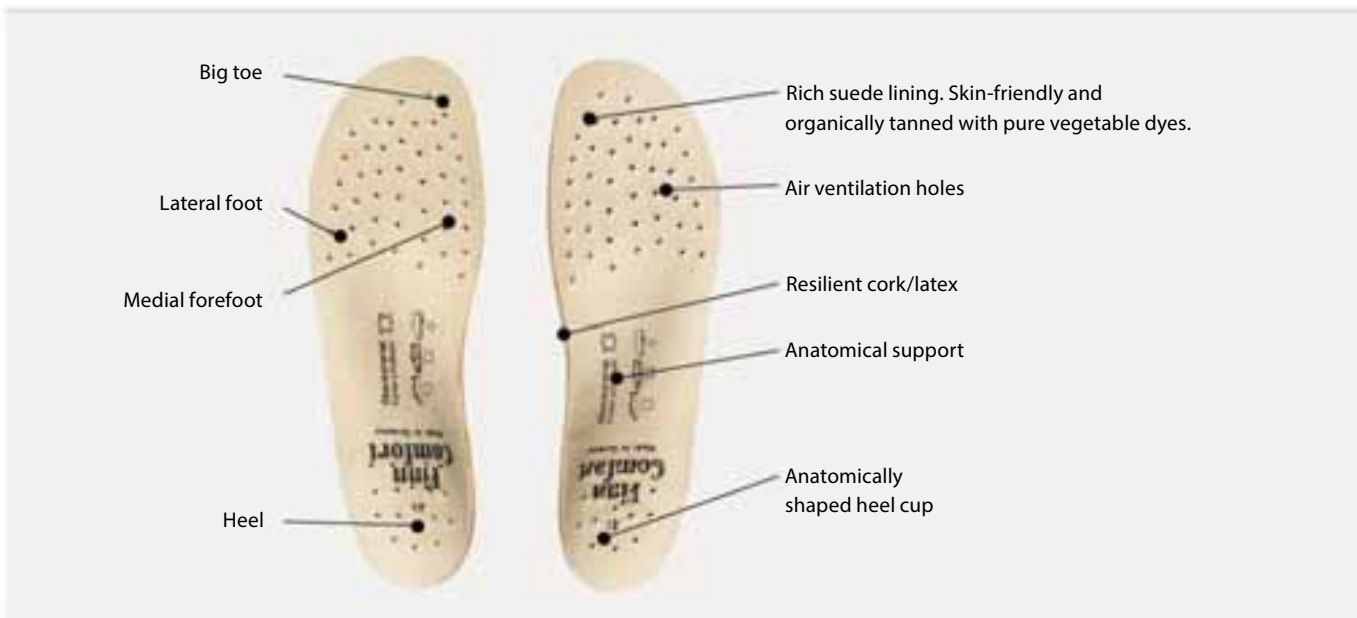


## DOUBLE YOUR PLEASURE

Supple and shock-absorbing, the **FinnComfort® Classic Comfort Footbed** ensures effortless walking all day long. Its anatomically correct orthopedic design provides serious support with every step. For an invigorating foot massage, the Classic Comfort Footbed is easily replaced with the **reflex zone massage footbed**. Massage footbeds may be sold separately.

## THE SUPER COMFORT FOOTBED

The anatomically-shaped **Super Comfort Footbed** enhances the natural heel-to-toe rolling motion via the heel, lateral foot, medial forefoot and big toe. The all natural Classic Comfort Footbed may be removed overnight for airing. It can also be hand washed with mild soap and warm water 30°C / 86°F.



## THE REFLEX ZONE MASSAGE FOOTBED

The **FinnComfort® Reflex Zone Massage Footbed** precisely stimulates the reflex zones on the soles of your feet. An invigorating break whenever you wish to revitalize body and mind.

Increase wearing time slowly from 5 minutes to a maximum of one hour daily and experience the unique feel-good effect. **Reflex Zone Massage Footbeds** may be sold separately in certain countries. Reflex zone footbeds are not suitable for diabetics!

## COMFORT BENEFITS AT A GLANCE

The comfort shoe with wonderful interchangeable footbeds.

